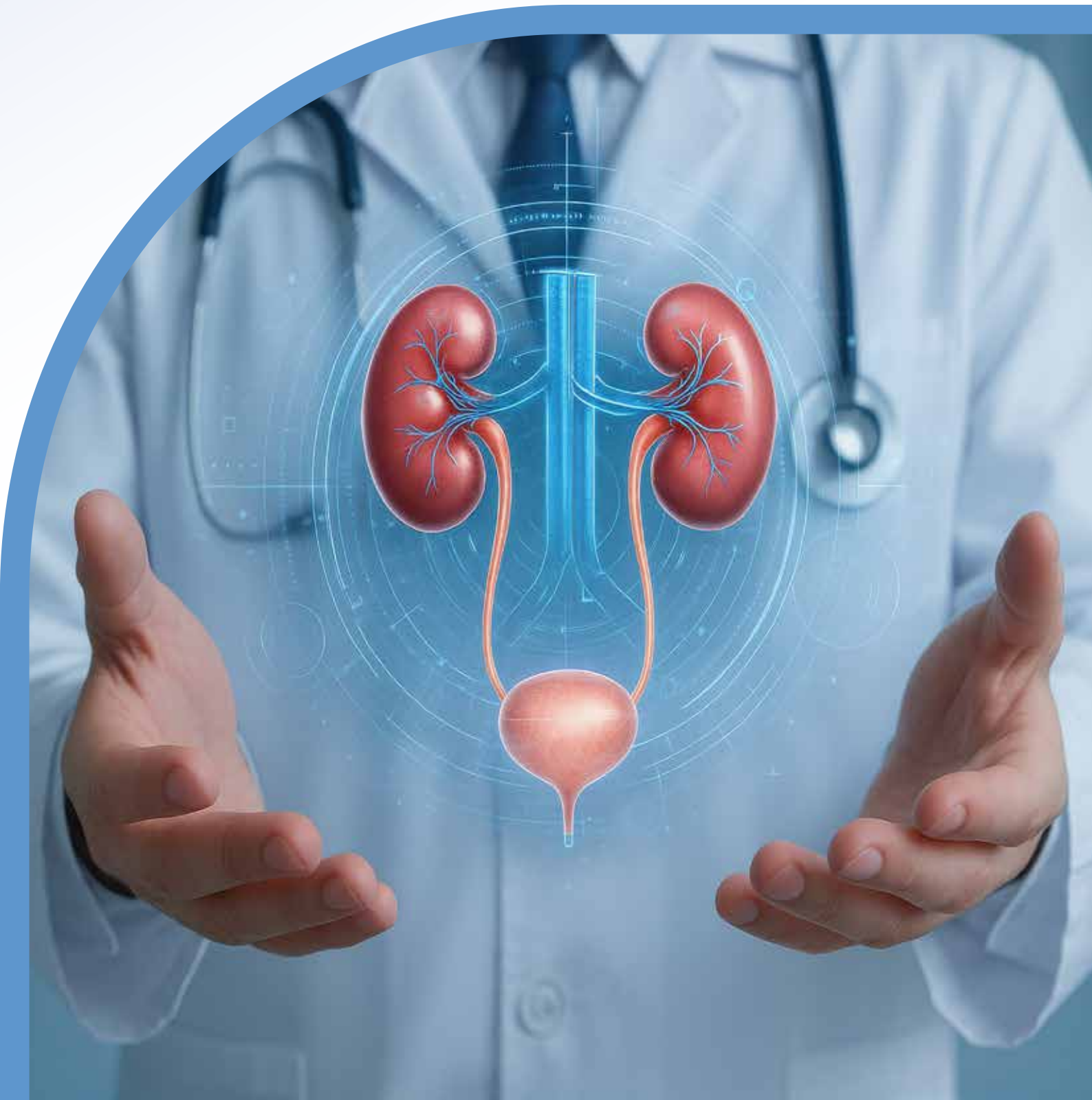


The Next Era Of

Urology



Meril

Operational since 2007, Meril is a global medical device company located 150 kms North of Mumbai at Vapi, Gujarat, India. Meril was launched in line with the health-care diversification plan of Bilakhia Group. Today, Meril is a global medical device company (distributing in over 150+ countries) dedicated to the design and development of novel, clinically relevant, state-of-the-art and best-in-class devices to alleviate human suffering and improve quality of life. Meril's operations span across a broad canvas ranging from Vascular Interventions, Structural Heart, Orthopedics, Robotics, Endo-Surgery, ENT In-vitro-Diagnostics (IVD), Urology, Gastroenterology, Women's Healthcare & Fertility Solution, Endoscopy, Critical Care and 360° Infection Prevention Solutions.

At Meril, we share an enduring commitment to advanced healthcare solutions, so that more patients live longer and healthier lives. Thus there is a strong commitment to R&D and adherence to the best quality.

Strong R&D focus

13 Business verticals

Vascular Interventions, Structural Heart, Orthopedics, Robotics, Endo-Surgery, ENT In-vitro-Diagnostics (IVD), Urology, Gastroenterology, Women's Healthcare & Fertility Solution, Endoscopy, Critical Care, 360° Infection Prevention Solutions.

ISO 13485 Certified
Ultra-modern Manufacturing facility
with more than 1 million sq.ft area

12 Best -in-class academies
to train HCP's and conduct
various CME programmes

Business presence in
150+ countries globally

Meril

250+ Product Families
responding to current
unmet clinical needs

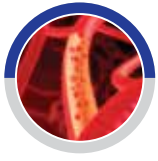
100% subsidiaries in 40+ countries

13,500+ Passionate employees



Vapi, India

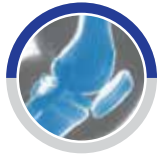
Meril Broad Operational Canvas



Vascular Interventions



Structural Heart



Orthopedics



Robotics



ENT



Endo-Surgery



In-vitro Diagnostics (IVD)



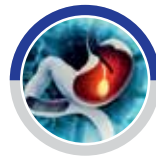
Urology



Gastroenterology



Women's Health & Fertility Solutions



Endoscopy



360° Infection Prevention & Solutions

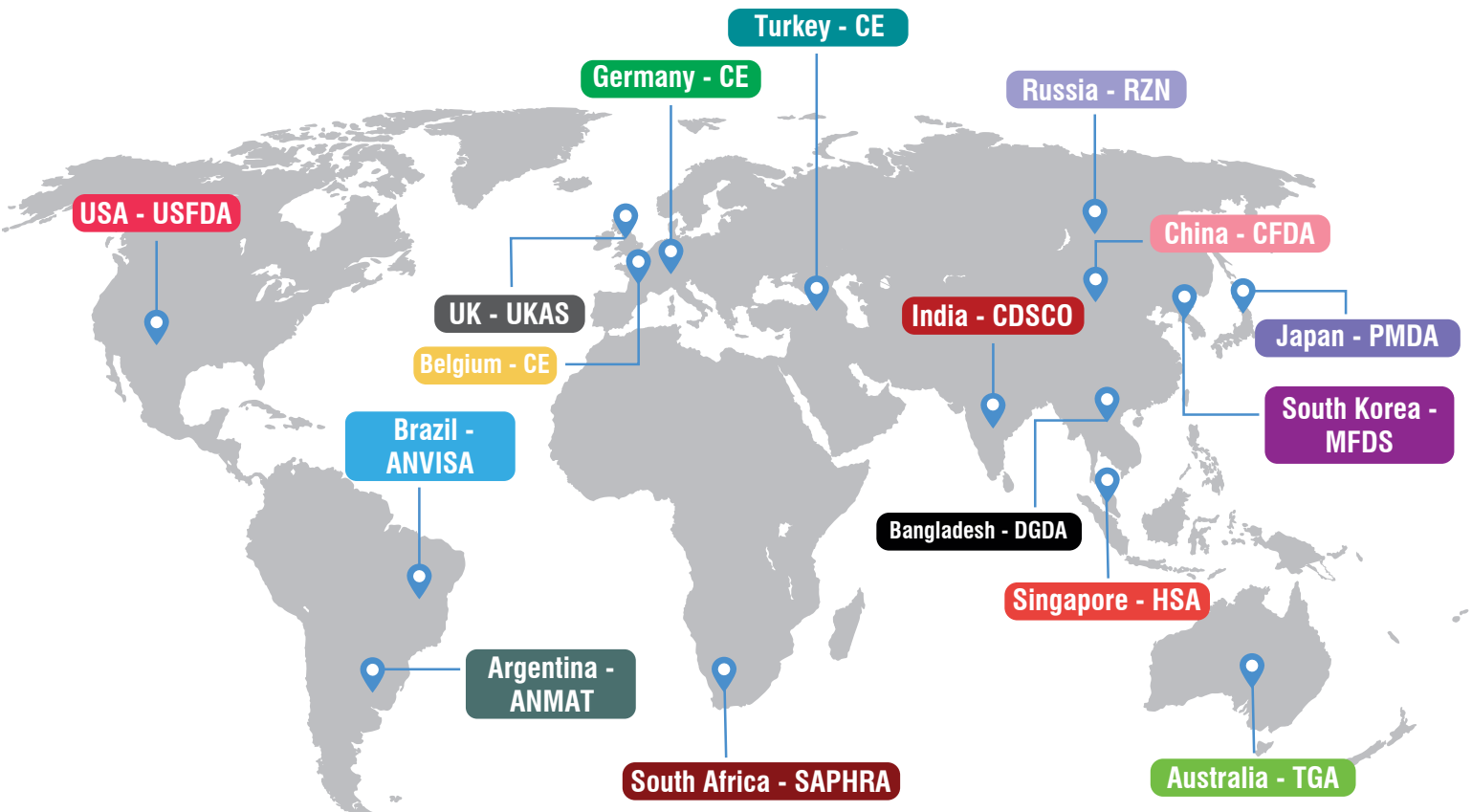


Critical Care

Meril's core objective is to design, manufacture and distribute clinically relevant, 'state-of-the-art' and 'best-in-class' medical devices / technologies to alleviate human suffering and improve quality of life.

With more than 100 acres of ultra-modern R & D and manufacturing facilities at Vapi, Meril has vertical integration of all activities to ensure superior product quality, clinical & scientific services at all times.

Meril ensures strong adherence to International quality & manufacturing standards. Our manufacturing facilities are certified & approved as per ISO 13485.



Meril | R&D

At Meril, we believe research to be the backbone of innovation and development. The genesis of the Meril identity “ri” illustrates the same, where ‘r’ represents ‘research’ and ‘i’ represents empowering ‘an individual’ with good health.

We collaborate globally with physicians and innovators to identify unmet clinical needs and develop clinically relevant therapies. We encourage research and academic collaborations and remain available to interact on exciting opportunities.



Where research becomes the basis for discovering new ways of alleviating human suffering and empowering an individual with good health.



Meril Park

Meril Training Academy

Meril has a strong commitment towards spreading awareness, imparting education and training to all our stake holders which range from patients to their care providers.

Meril Training Academy has a large campus spread over at Vapi, which allows sufficient room for doctors and paramedical personnel to be trained by global KOL faculty, while using innovative and modern training modalities.

Meril has provided training to more than 15,000+ Healthcare professionals in the last few years at academy in Vapi. Meril will be establishing 12 best-in-class academies across the globe by the end of 2025.

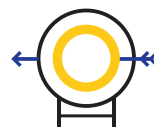


Academy Tenets



VISION

Transforming patient care through education



GOALS

Engaging 20,000 HCP's globally by 2025



MISSION

Developing skills for better clinical outcomes



COMMITMENT

By partnering with healthcare professionals to advance medical treatment

Commitment to Education & Training

CME accreditation From Medical Council of India (MCI) for all courses
Dedicated live case transmissions for Cardio, Ortho, Endo-Surgery on regular basis.

1000 +
Seating Capacity
Auditoria

10,000 +
HCPs
Participated



Scope Defined

With Clarity

Urology covers a broad spectrum of conditions affecting the urinary system and male reproductive health, from kidney stones to prostate care, the scope of urology extends to diagnosing, managing, and treating diverse urological disorders with cutting-edge solutions.



Access

The Gateway To Treatment

Timely access to urological care with innovations is essential for achieving better patient outcome. With advancement in minimally invasive techniques and robotic-assisted procedures, urology now delivers more precise, effective and less invasive treatment—faster than ever.





Diagnose Early & Accurately

Accurate diagnosis is the foundation of effective treatment in urology. With state-of-the-art imaging, diagnostics and AI-driven assessments. Specialists can detect conditions at an early stage, ensuring personalized and proactive patient care.



Treat Smarter, Heal Faster

Treatments in urology are becoming smarter with precision-guided tools, advanced energy systems and minimally invasive techniques. These innovations reduce tissue damage, improve accuracy and accelerate healing, ensuring faster recovery and better long-term outcome.

01 Consumables

Catheter

Deflure™ Ureteral Balloon Dilatation Catheter	10
SupraSure™ Suprapubic Cystostomy Catheter	11
Rescath™ General-Purpose Ureteral Catheter	12

Stone Basket

RI-Catch™ Urinary Stone Retrieval Basket (F)	14
Ri-Catch™ +Urinary Stone Retrieval Basket (R)	15
Messtone™ Urological Retrieval Coil	16

Sheath

Prouvre™ Ureteral Access Sheath (R)	18
Prouvre™ + Ureteral Access Sheath (Y)	19
Prouvre Pro™ Ureteral Access Sheath (YB)	20
Glizer™ Amplatz Sheath	21

Stent

UretrixPro™ Ureteral Stent Package	23
Uretrix™ + Hydrophilic Ureteral Stent	24
Uretrix™ Ureteral Stent	25
ReMosten™ Mono Stent	26

Guidewire

Zebcor™ Zebra Guidewire	28
Ribrid™ Hybrid Guidewire	29
Xcursion Hydrotip™ Hydrotip Guidewire	30
Hydroease™ Hydrophilic Guidewire.....	31
Meriskate™ PTFE Guidewire	32

Dilator

Dilato™ Fascial Dilator Set	34
Dilatrix™ Urethral Dilator	35
EasyDi™ Ureteral Dilator	36

02 Scope

ri-Uniview™ Digital Flexible Ureteroscope.....	38
riUroSnap™ Image Processor	39

03 Laser

MeriFRAG™ + Holmium Laser Portable System	41
---	----

04 Special Category

ProNeph™ Percutaneous Nephrolithotomy (PCNL) Package	42
--	----

Catheter

Precision Flow Seamless Motion

Our range of catheters ensures optimal flow and seamless performance in urological care. Designed for efficiency, comfort and reliability, our solutions empower both patients and healthcare professionals to move forward with confidence.

Deflure™

Ureteral Balloon Dilatation Catheter

Suprasure™

Suprapubic Cystostomy catheter

Rescath™

General-Purpose Ureteral Catheter



Deflure™ Ureteral Balloon Dilatation Catheter

Features

- Dual markers for precise balloon positioning reduces the need for prior dilatation or guidewire manipulation.
- Ensures rapid inflation / deflation, crucial in time-sensitive urological procedures.
- Pebax Material for optimal flexibility and pushability, smooth navigation and precise dilation.

Size Matrix

Catheter	Balloon Length	Catheter Length	Inflated Balloon Diameter
4 FR	60 mm	850 mm	5 mm
4 FR	60 mm	650 mm	

Use

The catheter dilates ureteral strictures or prepares the ureter for procedures.



SupraSure™

Suprapubic Cystostomy Catheter

Catheter

Features

- Chrysanthemum tip design can effectively prevent slip.
- Handle design for easy grip.
- Silicone remains soft at body temperature, enhanced patient comfort during extended use.

Size Matrix

Catheter size	18 FR Length: 23 Cm
---------------	---------------------

Use

It provides bladder drainage via percutaneous malecot catheter placement.



Rescath™

General-Purpose Ureteral Catheter

Features

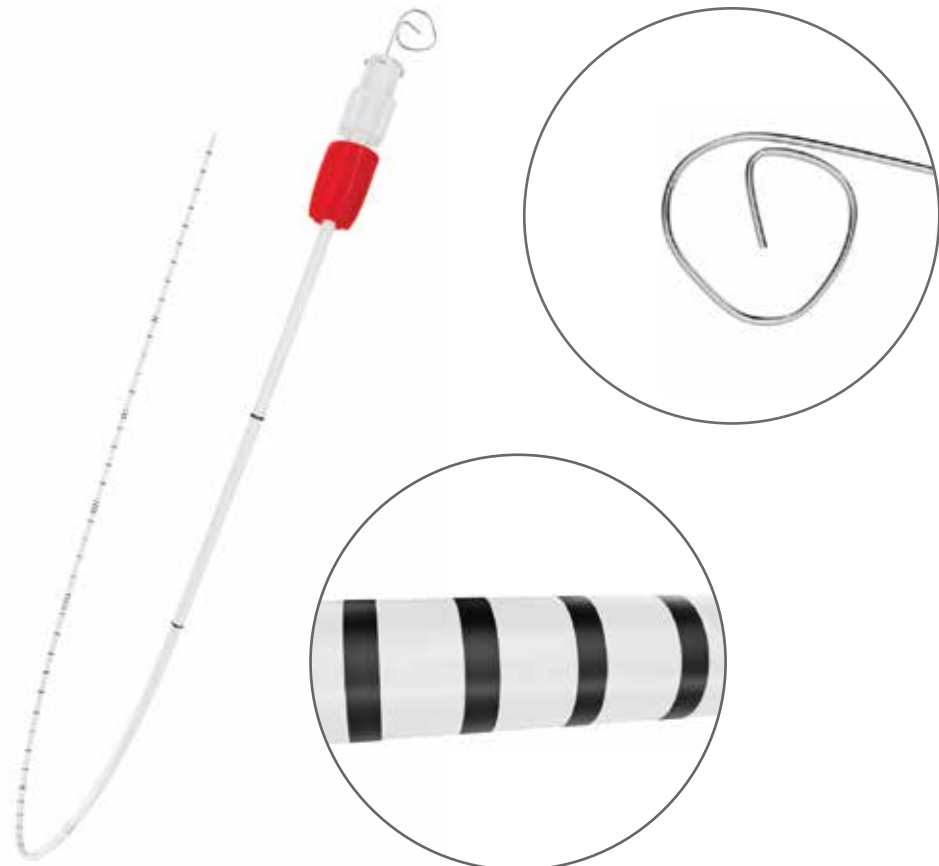
- Crafted from soft PVC for ideal flexibility and lasting strength.
- Enables smooth navigation and precise contrast delivery in urology procedures.
- Tapered tip reduces ureteral trauma and improves patient comfort.

Size Matrix

5 FR Length	6 FR Length
70 CM	70 CM

Use

It's a flexible tube for insertion into the ureters via cystoscope or nephroscope.



Stone Basket

Secure Grip, Precise Extraction

Just like an athlete's perfect catch, our stone baskets ensure a firm yet flexible grip for precise kidney stone retrieval. With shape memory and flexible properties, they minimize mucosal trauma, bleeding and injuries while maximizing procedural efficiency - empowering surgeons with confidence for every extraction.

Ri-CatchTM

Urinary Stone Retrieval Basket (Flexible)

Ri-Catch +TM

Urinary Stone Retrieval Basket (Rigid)

MesstoneTM

Urological Retrieval Coil



Ri-Catch™ Urinary Stone Retrieval Basket (Flexible)

Features

- The shape-memory design let allows the basket quickly return to its original shape after bends.
- Tipless Basket reduce trauma and enhances clear visualization.
- Nitinol wires offers strong shape memory and twist resistance for basket stability.
- PI core boosts rotation and control for precise stone retrieval.

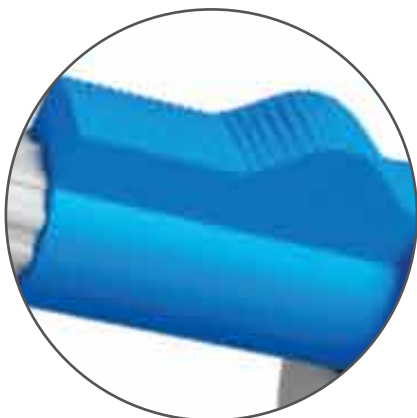
Size Matrix

Basket Size (Flexible)

L:90 CM	L:110 CM	L:120 CM
(3 FR) (4 wire)	1.7 FR (4 wire) ID - 0.38 mm, OD - 0.56 mm	(1.7 FR) (4 wire) (2.2 FR) (4 wire)
(1.9 FR) (3 wire)	2.2 FR (4 wire) ID - 0.45 mm, OD - 0.73 mm	(3 FR) (4 wire) (1.9 FR) (3 wire)
(2.2 FR) (3 wire)		(2.2 FR) (3 wire)

Use

It removes urinary stone during endoscopic procedures.



Ri-Catch+™

Urinary Stone Retrieval Basket (Rigid)

Features

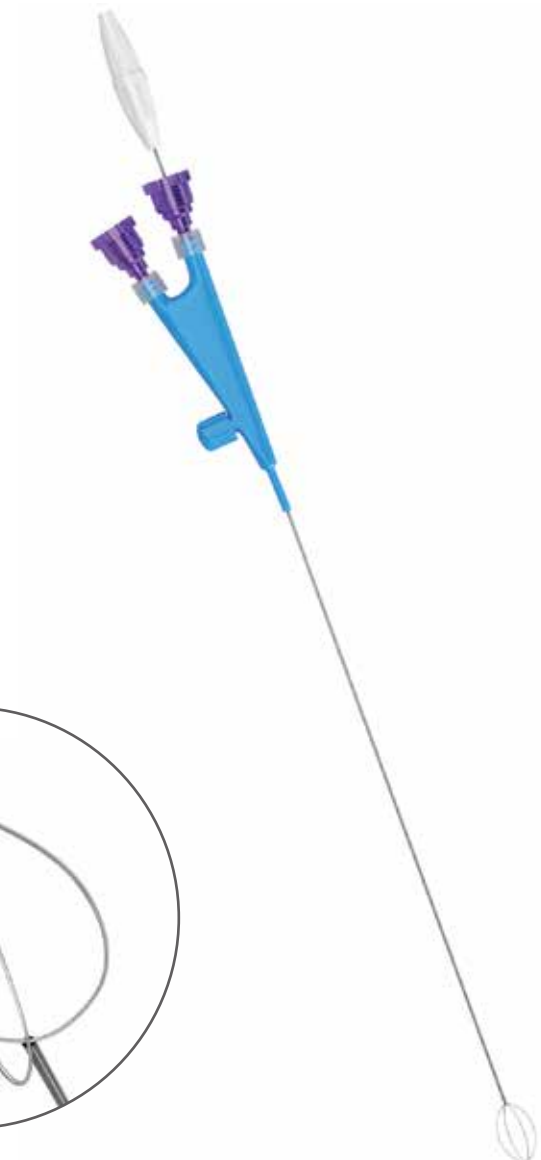
- Flexible shape-memory allows basket to quickly return to its original shape after bends.
- Tipless design minimizes trauma and ensures clear visualization.

Size Matrix

Basket Size (Rigid) : 4.5 FR (4 wire), length: 55 cm

Use

It removes urinary stones during rigid endoscopic procedures.



Messtone™

Urological Retrieval Coil

Features

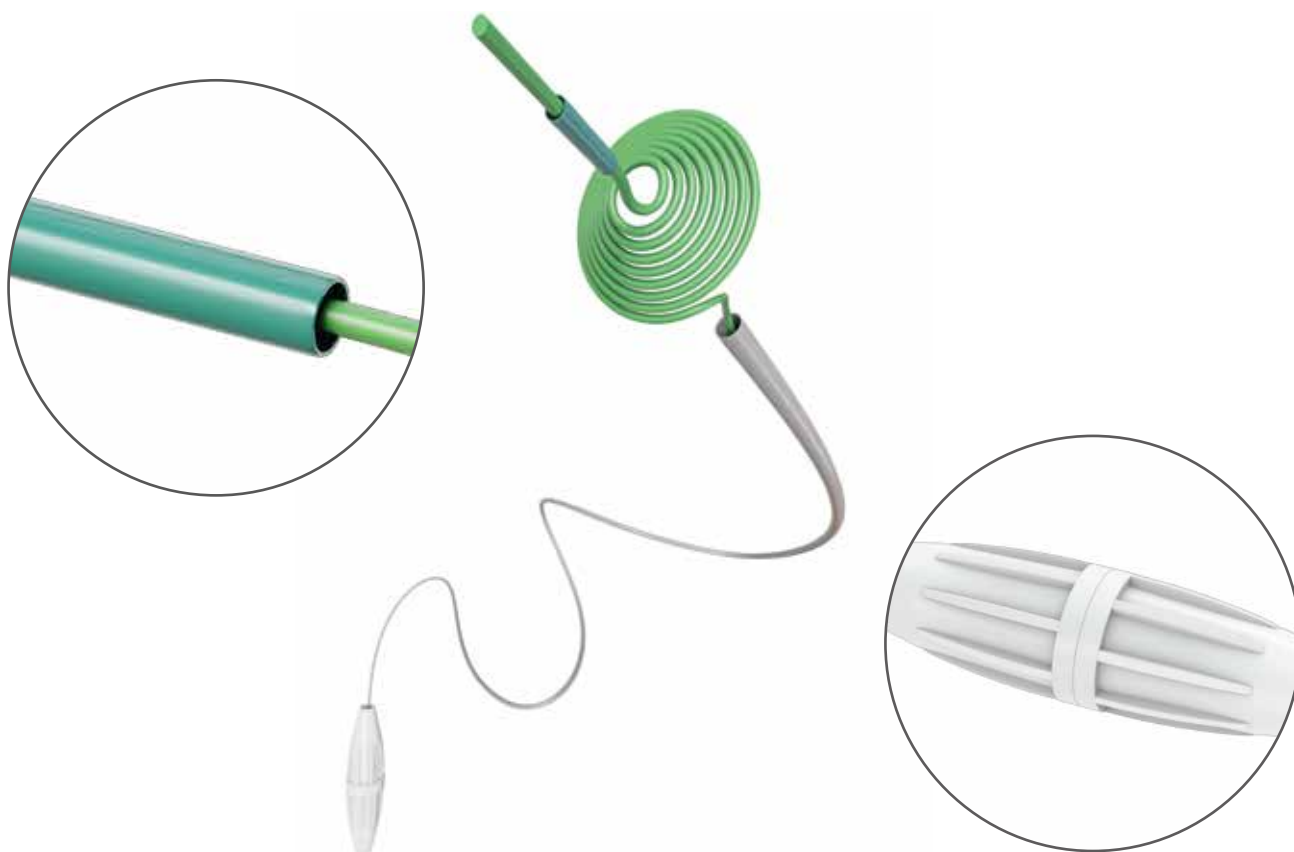
- It allows secure extraction of stone pieces.
- Can resist against unwanted holmium laser light energy.
- Facilitates fast exchanges of scopes with quick handle release.
- Enhances stone fragmentation, boosts stone-free rate and reduces need for additional therapy.

Size Matrix

Stone coil: 3 FR x Length: 115 CM

Use

It is used endoscopically to capture and remove urinary tract stones and objects.



Sheath

Seamless Access, Superior Strength

Just like a javelin's aerodynamic design ensures precision and control, our sheaths provide kink and pressure resistance for uncompromised access and stability. Engineered for effortless insertion and smooth navigation, it minimizes trauma while maximizing procedural efficiency, empowering surgeons with precision and confidence.

Provure™
Ureteral Access Sheath

Provure™ Pro
Ureteral Access Sheath - YB Bendable

Provure™ +
Ureteral Access Sheath - Y Type

Glizer™
Amplatz Sheath



Provure™ Ureteral Access Sheath

Features

- Hydrophilic coating ensures smooth sheath insertion.
- Ensuring multiple scope entries without re-dilation, leading to reduction in OR time.
- Maintains lumen integrity during manipulation.

Size Matrix

L:26 CM	9/11 FR		10/12 FR	
L:35 CM	9.5/11.5 FR	10/12 FR	10.5/12.5 FR	12/14 FR
L:45 CM	9.5/11.5 FR	10/12 FR	10.5/12.5 FR	12/14 FR



Use

It serves as working channel for the instruments during endoscopic Urinary procedures.



Provure™ +

Ureteral Access Sheath - Y Type

Features

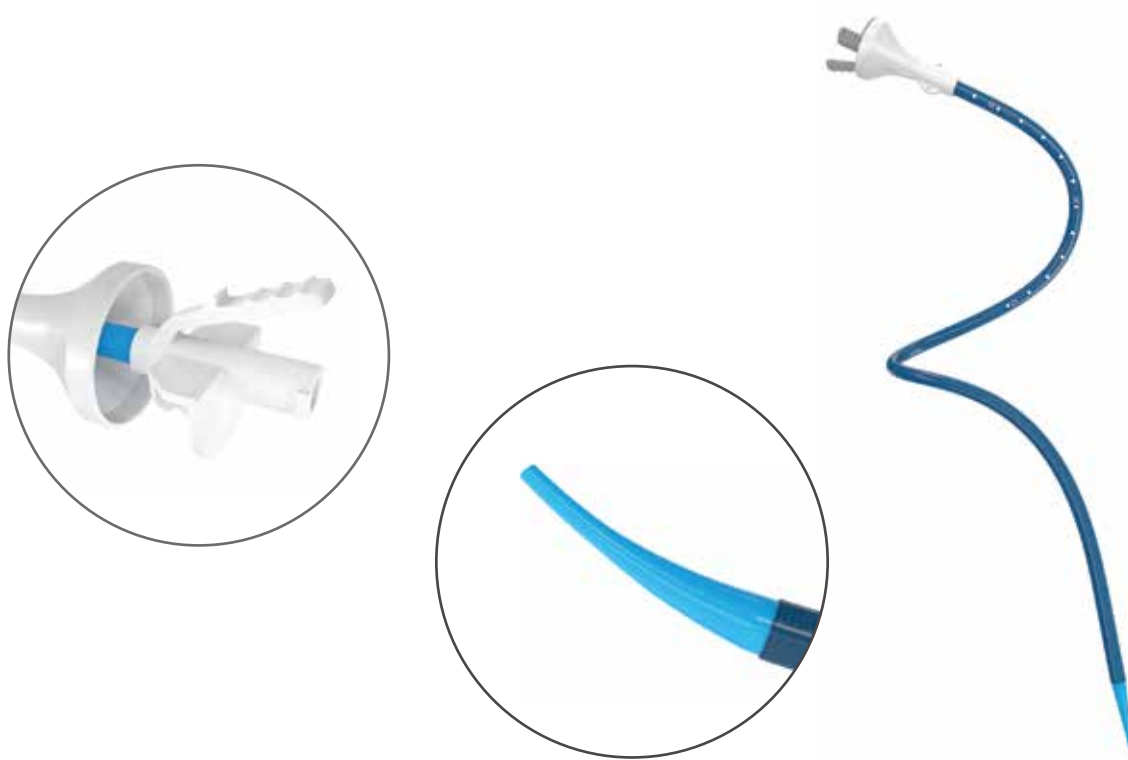
- Facilitates continuous irrigation and efficient fluid management.
- Enables simultaneous scope access and suction.
- Improves visibility by rapidly clearing stone fragments and debris.
- Y connector available for negative suction.

Size Matrix

L:26 CM	L:40 CM
9/11 FR	14/16 FR
10/12 FR	

Use

It facilitates instrument passage and suction in endoscopic urinary procedures.



Provure™ Pro

Ureteral Access Sheath - YB Bendable

Features

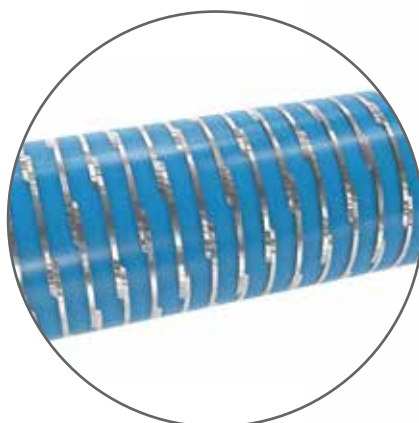
- Enhances access to lower pole and complex kidney calyces.
- Maintains lumen integrity while bending, ensuring consistent scope passage.
- Y connector available for negative suction with bendable tip.

Size Matrix

L:26 CM	9/11 FR		10/12 FR	
L:35 CM	9.5/11.5 FR	10/12 FR	10.5/12.5.FR	12/14 FR
L:45 CM	9.5/11.5 FR	10/12 FR	10.5/12.5.FR	12/14 FR
L:46 CM	13/15 FR			

Use

It aids endoscope passage and fluid injection in urinary procedures.



Glizer™

Amplatz Sheath

Features

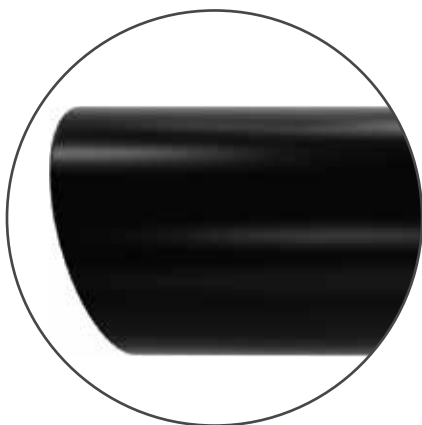
- Tapered distal end allows smooth, atraumatic advancement over dilators or balloons.
- Amplatz sheath's kink-resistant property and PTFE material boosts durability and reliability.

Size Matrix

L:17 CM	L:20 CM
18 FR	12 FR
	14 FR
	16 FR
20 FR	18 FR
	20 FR
	22 FR
22 FR	24 FR
	26 FR
	28 FR
24 FR	30 FR

Use

It dilates tissue around a dilator to maintain a nephrostomy tract for instrument access.



Stents

Strength in Support Precision in Placement

Just as an archer relies on skill and precision to hit the mark, surgeons need accuracy and control for successful interventions. Our stents are designed for effortless deployment, optimal positioning, and long-term reliability empowering surgeons with confidence and ensuring seamless outcomes for patients.

Uretrix™ Pro
Ureteral Stent Package

Uretrix™+
Hydrophilic Ureteral Stent

RiMosten™
Mono Stent

Uretrix™
Ureteral Stent



Uretrix™ Pro

Ureteral Stent Package

Features

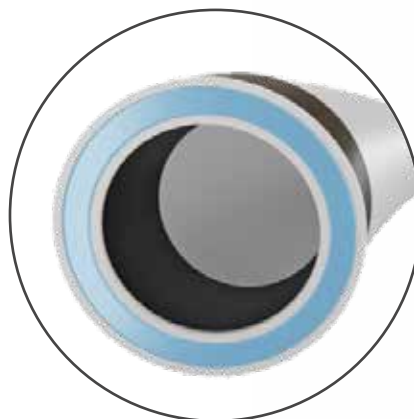
- Coating: With or without hydrophilic coating.
- In-dwelling Time: Less than 6 months.
- The ureteral stent is temperature-controlled, causing it to soften once inserted.
- Multiple holes with large lumens lead to improved drainage.
- Tapered tip is designed for easy advancement.

Size (Fr)

L:26 CM	L:28 CM	Guidewire
4.8 FR	4.8 FR	0.035 inch
5 FR	5 FR	
6 FR	6 FR	

Use

The ureteral stent provides drainage to relieve obstructions.



Uretrix™ +

Hydrophilic Ureteral Stent

Features

- Reduces surface friction, ensuring smooth insertion and removal.
- In-dwelling Time: Less than 6 months.
- Inner lumen design allows uninterrupted urine drainage, reducing risk of blockage.
- Multiple holes with large lumens lead to improved drainage.
- Low-friction surface reduces irritation and post-operative discomfort.

Size Matrix

Stent Size 26 CM	Stent Size 28 CM
4.8 FR	4.8 FR
5 FR	5 FR
6 FR	6 FR

Use

Hydrophilic ureteral stent provides temporary drainage from the ureteropelvic junction to the bladder.



Uretrix™

Ureteral Stent

Features

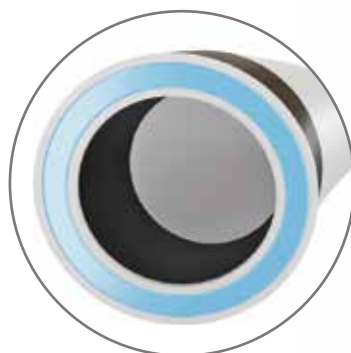
- In-dwelling Time: Less than 6 months.
- The ureteral stent is temperature-controlled, causing it to soften once inserted.
- Multiple holes with large lumens lead to improved drainage.
- Tapered tip is designed for easy advancement.

Size Matrix

L:26 CM	L:28 CM
4.8 FR	4.8 FR
5 FR	5 FR
6 FR	6 FR

Use

Ureteral stent provides temporary drainage from the ureteropelvic junction to the bladder.



RiMosten™

Mono Stent

Features

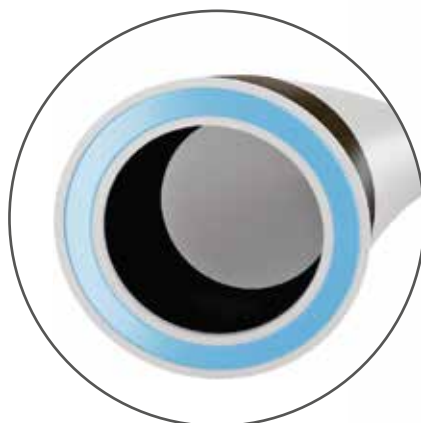
- Made from kink-resistant, durable polyurethane for reliable flexibility.
- In-dwelling Time: Less than 6 months.
- Holes in shaft lead to improved drainage.
- Tapered tip is designed for easy advancement.

Size Matrix

10 FR x Length: 50 CM

Use

Mono stent is used for drainage and irrigation, with a pig tail tip to retain it in the renal pelvis.



Guidewire

Smooth Navigation, Absolute Control

Just like a skier glides smoothly through twists and turns, our guidewire ensures seamless movement through complex pathways. Featuring a super-flexible nitinol core which prevents kinking, ensuring easy maneuver through narrow spaces and curves, providing surgeons with precision, reliability and confidence in every procedure.

Zebcor™
Zebra Guidewire

Ribrid™
Hybrid Guidewire

Hydroease™
Hydrophilic Guidewire

Meriskate™
PTFE Guidewire



Zebcor™

Zebra Guidewire

Features

- Excellent surface properties makes it super lubricious.
- It is simpler to see the movement of the guidewire because of the distinctive white and blue stripes.
- The super flexible nitinol core's exceptional torsional stiffness prevents kinking.
- The tapered tip shape allows the guidewire to navigate narrow spaces and curves more easily.

Size Matrix

STRAIGHT	Angled
0.028 inch X 150, 180, 260, 300, 450 CM	0.028 X 150, 180, 260, 300, 450 CM
0.032 inch X 150, 180, 260, 300, 450 CM	0.032 X 150, 180, 260, 300, 450 CM
0.035 inch X 150, 180, 260, 300, 450 CM	0.035 X 150, 180, 260, 300, 450 CM
0.038 inch X 150, 180, 260, 300, 450CM	0.038 X 150, 180, 260, 300, 450CM

Use

It facilitate the placement of devices during urological procedures by providing a smooth, flexible pathway.



Ribrid™

Hybrid Guidewire

Features

- Effortless navigation with a hydrophilic and PTFE coating.
- Guidewires are designed to be durable and resistant to wear and tear.
- Guidewires are designed to be safe and to minimize the risk of injury.

Size Matrix

STRAIGHT	Angled
0.035 inch X 150 CM	0.035 inch X 150 CM
0.038 inch X 150 CM	0.038 inch X 150 CM

Use

Hybrid Guidewires are intended to facilitate the placement of endourological instruments during diagnostic or interventional procedures.

Xcursion Hydrotip™

Hydrotip Guidewire

Features

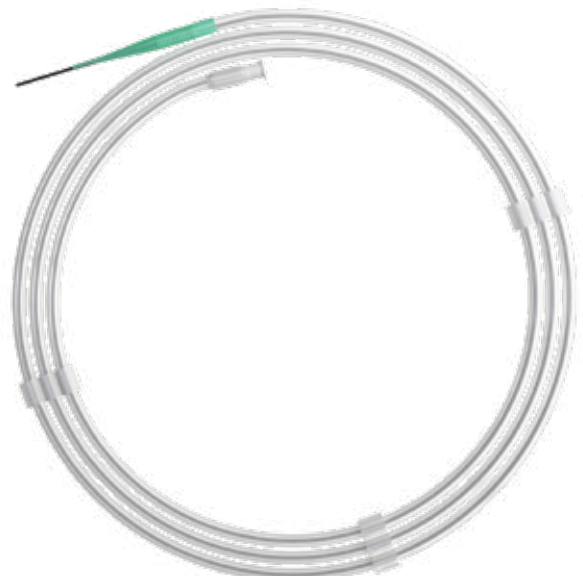
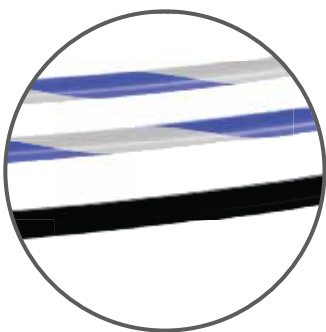
- Blue and white striped pattern is designed to provide clear endoscopic visualization of wire movement.
- PU distal tip is visible under fluoroscopy to aid in confirmation of guidewire position.
- Flexible PTFE "jacket" designed for torqueability.

Size Matrix

STRAIGHT	Angled
0.028 inch X 150, 180, 260, 300, 450 CM	0.028 X 150, 180, 260, 300, 450 CM
0.032 inch X 150, 180, 260, 300, 450 CM	0.032 X 150, 180, 260, 300, 450 CM
0.035 inch X 150, 180, 260, 300, 450 CM	0.035 X 150, 180, 260, 300, 450 CM
0.038 inch X 150, 180, 260, 300, 450CM	0.038 X 150, 180, 260, 300, 450CM

Use

Hydrotip guidewires enable urinary tract access and device guidance during endourology procedures.



Hydroease™

Hydrophilic Guidewire

Features

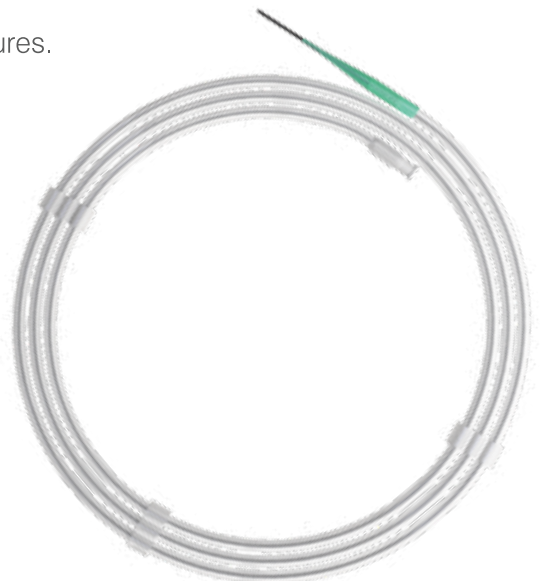
- Activates in wet conditions for ultra-low friction, enabling smooth navigation through strictures and complex anatomies.
- One-pass access with smooth trackability.
- Kink-resistant and memory retention.
- Hydrophilic coating remains active throughout the procedure for continuous smooth glide.

Size Matrix

STRAIGHT	Angled
0.028 inch X 150 CM	0.028 inch X 150 CM
0.032 inch X 150 CM	0.032 inch X 150 CM
0.035 inch X 150 CM	0.035 inch X 150 CM
0.038 inch X 150 CM	0.038 inch X 150 CM

Use

The hydrophilic guidewire aids smooth navigation in urinary procedures.



Meriskate™

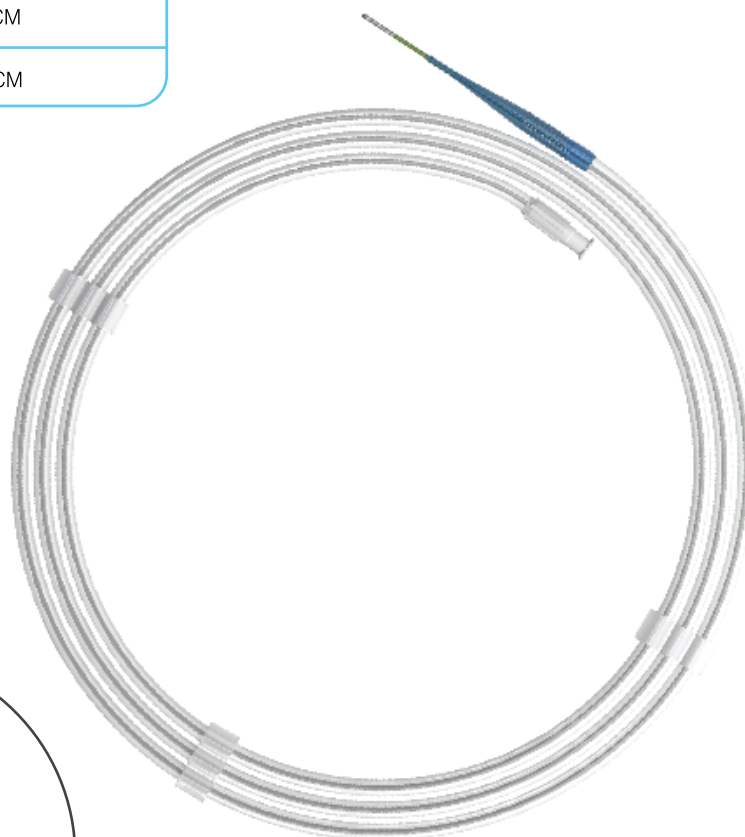
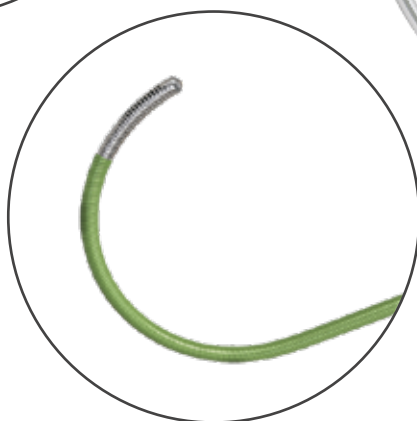
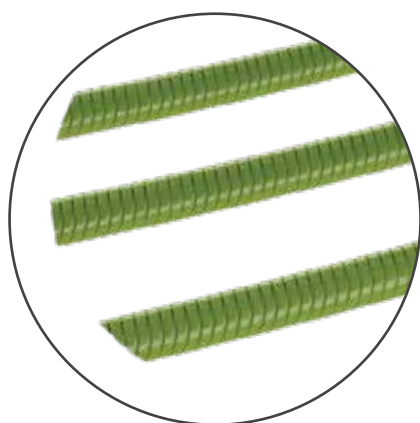
PTFE Guidewire

Features

- The flexible tip provides atraumatic advancement.
- Excellent torquability is intended for precise control and placement.

Size Matrix

STRAIGHT	J
0.028 inch X 150 CM	0.028 inch X 150 CM
0.032 inch X 150 CM	0.032 inch X 150 CM
0.035 inch X 150 CM	0.035 inch X 150 CM
0.038 inch X 150 CM	0.038 inch X 150 CM



Dilator

Gentle Expansion, Effortless Precision

Like the artful rhythm of a gymnast's performance, where every movement is deliberate and fluid, our dilators are crafted for smooth and controlled expansion. With optimal flexibility and precise dilatation, they navigate anatomical pathways effortlessly, minimizing trauma while maximizing procedural efficiency empowering surgeons with confidence at every step.

DilatoTM
Fascial Dilator Set

DilatrixTM
Urethral Dilator

EasyDiTM
Ureteral Dilator



Dilato™

Fascial Dilator Set

Features

- Facilitate smooth surface for atraumatic entry.
- High durability.
- Effective stricture dilatation improves outcome with great patient comfort.

Size Matrix

L:18 CM	L:22 CM
Dilator: 8-18 Fr	6 to 16 FR
	6 to 18 FR

Use

It aids passage of nephrostomy or malecot catheters.



Dilatrix™ Urethral Dilator

Features

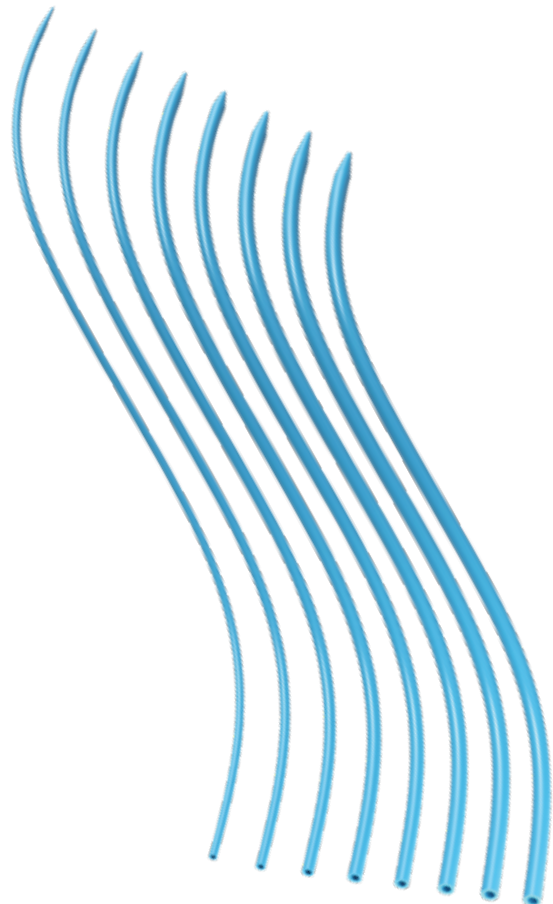
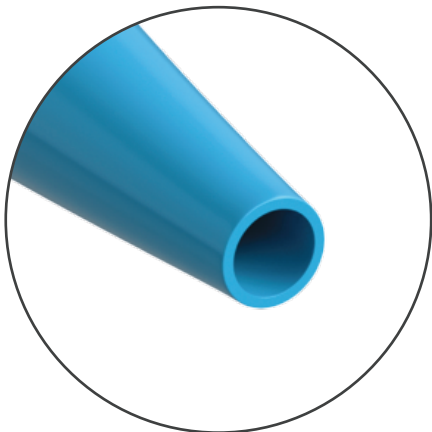
- Maintains shape while adapting to anatomical curves.
- Tapered end with outstanding durability.
- Biocompatible material results in better experience.

Size Matrix

- | | | |
|------------------------|------------------------|------------------------|
| • 8Fr x Length : 37CM | • 14Fr x Length : 37CM | • 20Fr x Length : 37CM |
| • 10Fr x Length : 37CM | • 16Fr x Length : 37CM | • 22Fr x Length : 37CM |
| • 12Fr x Length : 37CM | • 18Fr x Length : 37CM | • 24Fr x Length : 37CM |

Use

It dilates the urethra before ureteroscopy or stone removal



EasyDi™

Ureteral Dilator

Features

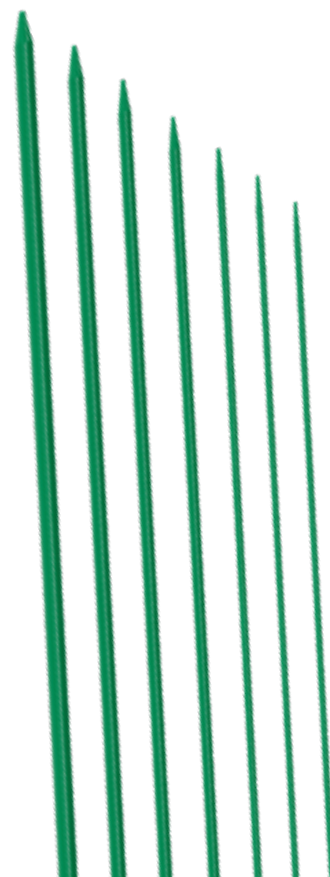
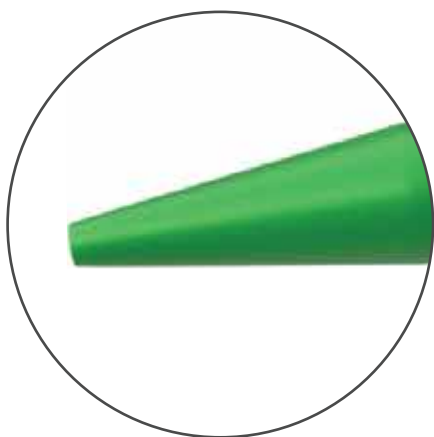
- Smooth dilator surface ensure low-friction with minimal patient trauma.
- Tapered end with outstanding durability and resilience.
- Biocompatible material results in better experience.

Size Matrix

- 6FR X Length:60CM
- 8FR X Length:60CM
- 10FR X Length:60CM
- 12FR X Length:60CM
- 14FR X Length:60CM
- 16FR X Length:60CM

Use

The Ureteral Dilator widens the ureter before ureteroscopy or stone removal.



Scope

Clarity in Vision, Precision in Action

Just as binoculars bring distant details into sharp focus, our ureteroscope provides exceptional imaging for precise diagnosis and treatment. Equipped with a high-performance CMOS camera and advanced LED illumination, it delivers high-definition visualization, ensuring accurate navigation, enhanced clarity and superior procedural outcome empowering surgeons with confidence at every step.

ri-Uniview™

Digital Flexible Ureteroscope



ri-Uniview™

Digital Flexible Ureteroscope

Features

- The digital flexible ureteroscope has both the apex and the insertion tube maintained at 6.3 Fr , 7.5 Fr & 8.5 Fr, with the apex capable of bending in four directions (275 degrees up and down, 90 degrees left and right) for imaging.

Parameters

Outer Diameter (Fr)	Working Length (mm)	Working Channel Diameter (Fr)	Angle of bend	Depth of Field	Field of view
6.3	650	3.0	Left & Right 90° Up & Down 275°	5-150 mm	140°
7.5	650	3.6	Left & Right 90° Up & Down 275°	5-150 mm	140°
8.5	650	3.6	Left & Right 90° Up & Down 275°	5-150 mm	140°
6.3	680	3.0	Left & Right 90° Up & Down 275°	5-150 mm	140°
7.5	680	3.6	Left & Right 90° Up & Down 275°	5-150 mm	140°
8.5	680	3.6	Left & Right 90° Up & Down 275°	5-150 mm	140°
6.3	700	3.0	Left & Right 90° Up & Down 275°	5-150 mm	140°
7.5	700	3.6	Left & Right 90° Up & Down 275°	5-150 mm	140°
8.5	700	3.6	Left & Right 90° Up & Down 275°	5-150 mm	140°

Use

The Ureteroscope system visualizes and access urinary tract areas via transurethral or percutaneous access.



riUroSnap™

Image Processor

Scope

Features

- Delivers ultra-clear, high-contrast visualization with true color fidelity.
- Equipped with multiple video output ports for connecting additional screens.
- Enables data recording with USB drive and SD card storage capability.

Technical Specifications

Camera: 3200000 pixels 1/2.8" CMOS

Resolution: 1920×1080 FHD

Definition: 1080 Lines

Video output: BNC, DVI, VGA, HDMI.

- Video Storage: SD Card, USB
- Camera cable Length: 3.0 m
- LED Lamp power: 100 W
- Long life: ≥ 44000 Hours.
- White Balance: Automatic

Input Power: 110-220 V - 50/60 Hz

Language: Chinese, English, Russian, Japanese, Spanish (switchable)



Urology

Laser

Performance in Motion,
Precision in Action

MeriFRAG™ +

Holmium Laser Portable System



MeriFRAG + Holmium Laser Portable System

MeriFRAG + 40 W HOLMIUM LASER FOR LITHOTRIPSY

- MeriFRAG + surgical laser is a Holmium YAG (Ho:YAG) laser that is designed for Lithotripsy, Coagulation and tissue cutting / ablation.
- The Laser with a wavelength of 2100nm is highly absorbed by water and biological tissue provides excellent cutting, ablation and hemostatic properties.
- The surrounding tissue sustains minimal damage as a result of the restricted penetration (0.3 - 0.4 mm).

MeriFRAG + HOLMIUM LASER SYSTEM

- Effective Lithotripsy.
- Minimal Penetration.
- Soft Tissue Surgery.
- Compact Design and Light Weight.
- All-Round Solution for All The Stones.

Technical Specification

Output Power (Max)	40 WATTS
Pulse Frequency	1-30Hz
Pulse Energy	0.1 - 6.0J
Laser Type	Holmium Laser (Ho:YAG)
Wavelength	2.1µm
Pulse Duration	50 - 1500 µm
Aiming Beam	532 nm < 1 mW can be fine-tuned
Cooling system	Internal Cooling System
Fibers	Reusable 200,276, 365, 550,800,1000um
Main Supply	220V + 22V/ 50 Hz + 1Hz Available
Dimension and Weight	49 cm(H) x 46 cm(W) x 56 cm(L) - 45 kg

Application Details

MeriFRAG + can be used to execute a variety of clinical procedures, including soft tissue incision, excision, resection, ablation, vaporization, coagulation, hemostasis and stone lithotripsy.

Different Modes of Lithotripsy

1. Fragmentation Mode.
2. Popcorn Mode.
3. Dusting Mode.



ProNeph

Percutaneous Nephrolithotomy (PCNL) Package

Features

- To safely create a percutaneous tract into the kidneys, dilate the access and facilitate stone removal using appropriate instruments.
- Package Includes
 - Fascial Dilator Set
 - PTFE / Hydrophilic Guidewire
 - Puncture Needle
 - Peel Away Sheath
 - Nephrostomy Tube



Size

Peel away sheath

L:19 CM	12 Fr	14 Fr	16 Fr	18 Fr
---------	-------	-------	-------	-------

Nephrostomy tube

L:18 CM	12 FR	14 FR	16 FR	18 FR	20 FR	22 FR	24 FR
L:22 CM	12 FR	14 FR	16 FR	18 FR	20 FR	22 FR	24 FR
L:22 CM	12 FR	14 FR	16 FR	18 FR	20 FR	22 FR	24 FR

Puncture needle : 18 Goval Tip Length: 20 CM

Hydrophilic / PTFE Guidewire : 0.035" inch Length: 150 CM

Fascial Dilator Set

L:18 CM	8 FR	10 FR	12 FR	14 FR	16 FR	18 FR	22 FR
L:22 CM	8 FR	10 FR	12 FR	14 FR	16 FR	18 FR	22 FR

Use

The PCNL package used for kidney stone removal PCNL Procedure.

Leading the Way in Advanced Urological Solution

Urology Solutions Upcoming Portfolio

- Urine Bag
- Bladder Evacuator
- Tur Set Evacuator
- Irrigation Bulb / Pathfinder / Ureteroscopy Irrigation System / Single Action Pumping System Evacuator
- Implantable Transprostatic Tissue Retractor System
- Disposable Two Parts Trocar Needle Evacuator
- Latex Foley Catheter
- Silicone Foley Catheter
- Silicone Foley Catheter With Temperature Probe
- PCN Catheter SET
- Nelaton Catheter
- Meatal Dilator Male
- Meatal Dilator Female
- Screw Dilator
- Black Silicone Double Pigtail Ureteral Stent
- Percutaneous Nephrostomy Set
- Pneumatic Lithotripter
- Pneumatic Ultrasonic Lithotripter
- Thulium Fiber Laser System
- Thulium Laser Fibers
- Holmium Laser System 100W
- Urodynamic System
- Uroflowmeter
- Flexible Cystoscope
- Nephroscope
- Resectoscope
- Morcellator
- Single Arm Urology Robot
- Artificial Penile Prosthesis
- Artificial Urinary Sphincter

 Manufactured by

Meril Medical Innovations Pvt.Ltd.

Meril Park 2, F5, F6 Survey No. 879, Muktanand Marg, Chala,
Vapi, Valsad, Gujrat, 396191, India.

Tel: +91 260 240 8000

Fax: + 91 (260) 240 8025

E-mail: askinfo@merillife.com

Website:<http://www.merillife.com>