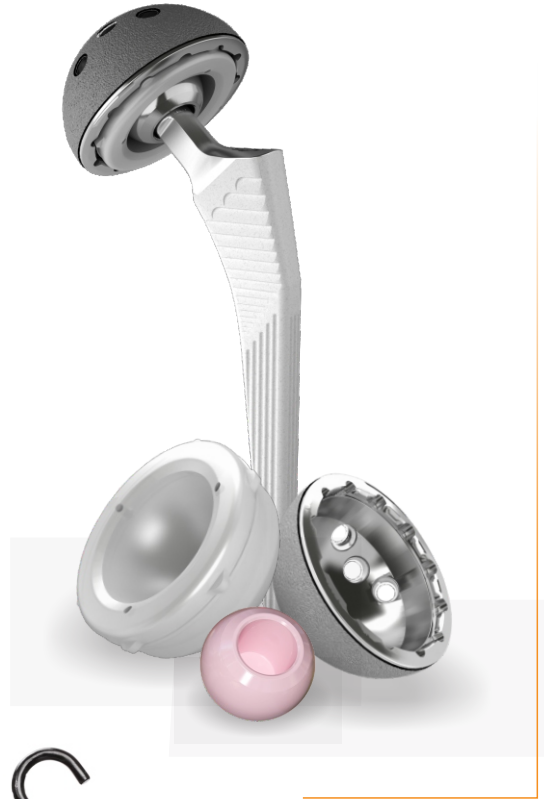


maxx  
medical

LIBERTAS®  
G HIP



YES TO  
NEXT

Pursue Life™

# LIBERTAS® ACETABULAR CUP

## SYSTEM DESIGN FEATURES

### THE PRESS FIT CONCEPT

The LIBERTAS® Modular Shell has been designed to be implanted into the acetabulum most tightly just below the shell equator (Fig. 1). This is obtained by over-sizing of the shell proximally, with the shell diameter in this area being 1.3mm larger in relation to the reamed cavity in the bone.

On impaction of the Modular shell into the acetabulum, the exterior shell surface has been designed to pre-stress the bone in the oversized area specifically to prevent unwanted preferential apical loading. For this reason the shell has been designed with a relatively flat base (Fig. 2).

The LIBERTAS® shell press fit is designed to occur just below the acetabular bone margin, and this further assists retention of the shell.

A size 52mm shell is actually 53.3mm in diameter at the equator, and 51mm at the apex. In standard bone, when implanting a 52mm shell, a 52mm reamer is used. It is possible to increase the degree of pre-loading by using a shell size larger than that pre-reamed. (e.g. a 54mm shell is implanted into a 52mm or 53mm reamed cavity).

This is important to consider in conditions such as osteoporosis, rheumatoid arthritis, and patients on steroid treatment etc.



Fig 1.

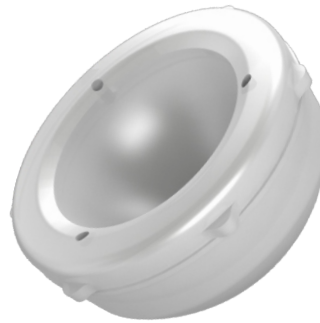


Fig 2.

# LIBERTAS® ACETABULAR CUP SYSTEM

## SYSTEM SIZING

### MODULAR SHELL

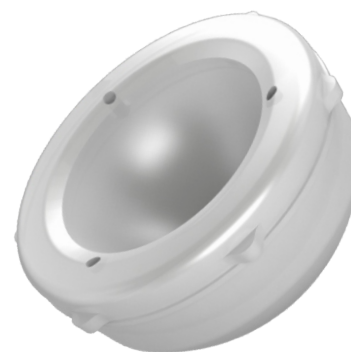
PART NO.	SIZE (MM)	DESCRIPTION
MO-MSEC-40/MA	40/MA	Cementless Ti6Al4V-ELI 40mm Modular Shell
MO-MSEC-42/MA	42/MA	Cementless Ti6Al4V-ELI 42mm Modular Shell
MO-MSEC-44/MB	44/MB	Cementless Ti6Al4V-ELI 44mm Modular Shell
MO-MSFC-46/MB	46/MB	Cementless Ti6Al4V-ELI 46mm Modular Shell
MO-MSFC-48/MD	48/MD	Cementless Ti6Al4V-ELI 48mm Modular Shell
MO-MSFC-50/MD	50/MD	Cementless Ti6Al4V-ELI 50mm Modular Shell
MO-MSFC-52/MF	52/MF	Cementless Ti6Al4V-ELI 52mm Modular Shell
MO-MSFC-54/MF	54/MF	Cementless Ti6Al4V-ELI 54mm Modular Shell
MO-MSFC-56/MH	56/MH	Cementless Ti6Al4V-ELI 56mm Modular Shell
MO-MSFC-58/MH	58/MH	Cementless Ti6Al4V-ELI 58mm Modular Shell
MO-MSFC-60/MJ	60/MJ	Cementless Ti6Al4V-ELI 60mm Modular Shell
MO-MSFC-62/MJ	62/MJ	Cementless Ti6Al4V-ELI 62mm Modular Shell
MO-MSFC-64/MJ	64/MJ	Cementless Ti6Al4V-ELI 64mm Modular Shell
MO-MSFC-66/MK	66/MK	Cementless Ti6Al4V-ELI 66mm Modular Shell
MO-MSFC-68/MK	68/MK	Cementless Ti6Al4V-ELI 68mm Modular Shell
MO-MSFC-70/MK	70/MK	Cementless Ti6Al4V-ELI 70mm Modular Shell



Material : Titanium alloy (Ti6Al4V – ELI) with Ti-Growth® Titanium plasma spray coating

### MODULAR LINER (HXLPE)

PART NO.	SIZE (MM)	DESCRIPTION
MO-MLHE-MA/22	MA/22	HXLPE MA/22 Modular Liner
MO-MLHE-MB/22	MB/22	HXLPE MB/22 Modular Liner
MO-MLHE-MB/28	MB/28	HXLPE MB/28 Modular Liner
MO-MLHE-MD/28	MD/28	HXLPE MD/28 Modular Liner
MO-MLHE-MD/32	MD/32	HXLPE MD/32 Modular Liner
MO-MLHE-MF/28	MF/28	HXLPE MF/28 Modular Liner
MO-MLHE-MF/32	MF/32	HXLPE MF/32 Modular Liner
MO-MLHE-MF/36	MF/36	HXLPE MF/36 Modular Liner
MO-MLHE-MH/28	MH/28	HXLPE MH/28 Modular Liner
MO-MLHE-MH/32	MH/32	HXLPE MH/32 Modular Liner
MO-MLHE-MH/36	MH/36	HXLPE MH/36 Modular Liner
MO-MLHE-MJ/32	MJ/32	HXLPE MJ/32 Modular Liner
MO-MLHE-MJ/36	MJ/36	HXLPE MJ/36 Modular Liner
MO-MLHE-MJ/40	MJ/40	HXLPE MJ/40 Modular Liner
MO-MLHE-MK/32	MK/32	HXLPE MK/32 Modular Liner
MO-MLHE-MK/36	MK/36	HXLPE MK/36 Modular Liner
MO-MLHE-MK/40	MK/40	HXLPE MK/40 Modular Liner



Material : Titanium alloy (Ti6Al4V – ELI) with Ti-Growth® Titanium plasma spray coating  
(HXLPE – Grade : GUR® 1020) cross linked at radiation dose of 75 kGy

# LIBERTAS® ACETABULAR CUP SYSTEM

## SYSTEM SIZING

MODULAR SHELL SIZES (MM)	MODULAR FEMORAL HEAD SIZES (MM)					MODULAR LINER SIZES (MM)
	22*	28	32	36	40	
40						MA
42						MA
44						MB
46						MB
48						MD
50						MD
52						MF
54						MF
56						MH
58						MH
60						MJ
62						MJ
64						MJ
66						MK
68						MK
70						MK

\* Not available in BioloX® delta Modular Femoral Head

### NOTE

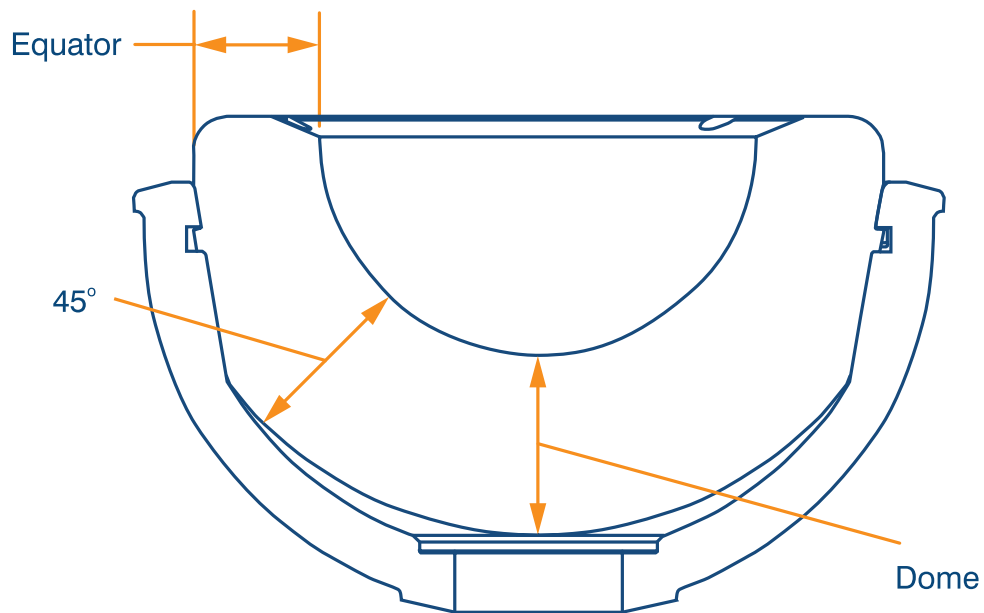
- The Libertas® Acetabular Cup System has been designed to assemble with Modular Shell and Modular Liner assembly that utilize a 22mm, 28mm, 32mm, 36mm or 40mm Cobalt Chromium Alloy Modular Femoral Head or 28mm, 32mm, 36mm or 40mm BioloX® delta Modular Femoral Head.

### WARNING AND PRECAUTIONS

- The Libertas® Acetabular Cup System when used along with LIBERTAS Cemented Femoral Stem, It is not recommended to use the Cobalt-Chromium Alloy Modular Femoral Head above 28mm and BioloX® delta Modular Femoral Head above 28mm.

# LIBERTAS® ACETABULAR CUP

## LINER THICKNESS CHART



		CoCr / BIOLOX® DELTA CERAMIC FEMORAL HEAD SIZE (MM)														
SHELL mm	LINER mm	22mm			28mm			32mm			36mm			40mm		
		DOME	45°	EQUATOR	DOME	45°	EQUATOR	DOME	45°	EQUATOR	DOME	45°	EQUATOR	DOME	45°	EQUATOR
40/MA	MA	8.1	7.7	6.2												
42/MA	MA	8.1	7.7	6.2												
44/MB	MB	8.1	9.5	6.7	5.1	6.5	3.7									
46/MB	MB	8.1	9.5	6.7	5.1	6.5	3.7									
48/MD	MD				7.1	7.9	5.7	5.1	5.9	3.7						
50/MD	MD				7.1	7.9	5.7	5.1	5.9	3.7						
52/MF	MF				9.0	9.9	7.7	7.0	7.9	5.7	5.0	5.9	3.7			
54/MF	MF				9.0	9.9	7.7	7.0	7.9	5.7	5.0	5.9	3.7			
56/MH	MH				11.0	11.3	9.7	9.0	9.3	7.7	7.0	7.3	5.7			
58/MH	MH				11.0	11.3	9.7	9.0	9.3	7.7	7.0	7.3	5.7			
60/MJ	MJ							11.0	10.8	9.7	9.0	8.8	7.7	7.0	6.8	5.7
62/MJ	MJ							11.0	10.8	9.7	9.0	8.8	7.7	7.0	6.8	5.7
64/MJ	MJ							11.0	10.8	9.7	9.0	8.8	7.7	7.0	6.8	5.7
66/MK	MK							11.0	11.5	10.7	9.0	9.5	8.7	7.0	7.5	6.7
68/MK	MK							11.0	11.5	10.7	9.0	9.5	8.7	7.0	7.5	6.7
70/MK	MK							11.0	11.5	10.7	9.0	9.5	8.7	7.0	7.5	6.7

# LIBERTAS® ACETABULAR CUP SYSTEM

## SYSTEM SIZING

### BONE SCREW

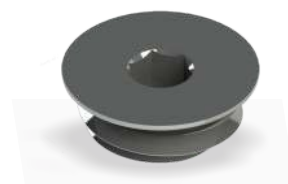
PART NO.	SIZE (MM)	DESCRIPTION
MO-SWCC-65/15	15	Ti6Al4V-ELI Ø 6.5 mm length 15 mm Bone Screw
MO-SWCC-65/20	20	Ti6Al4V-ELI Ø6.5 mm length 20 mm Bone Screw
MO-SWCC-65/25	25	Ti6Al4V-ELI Ø 6.5 mm length 25 mm Bone Screw
MO-SWCC-65/30	30	Ti6Al4V-ELI Ø 6.5 mm length 30 mm Bone Screw
MO-SWCC-65/35	35	Ti6Al4V-ELI Ø6.5 mm length 35 mm Bone Screw
MO-SWCC-65/40	40	Ti6Al4V-ELI Ø6.5 mm length 40 mm Bone Screw
MO-SWCC-65/45	45	Ti6Al4V-ELI Ø6.5 mm length 45 mm Bone Screw
MO-SWCC-65/50	50	Ti6Al4V-ELI Ø6.5 mm length 50 mm Bone Screw



Material : Titanium alloy (Ti6Al4V – ELI)

### APICAL HOLE OCCLUDER

PART NO.	DESCRIPTION
MO-AOAC-10/35	Ti6Al4V-ELI M10 Threading 3.5 mm hex drive Apical Hole Occluder



Material : Titanium alloy (Ti6Al4V – ELI)

# LIBERTAS<sup>®</sup> CEMENTLESS FEMORAL STEM

## SYSTEM SIZING

### 125° STANDARD

PART NO.	SIZE (MM)	DESCRIPTION
MO-STAC-25/01	1	Cementless Ti6Al4V-ELI 125° Standard Size 1 Stem 130
MO-STAC-25/02	2	Cementless Ti6Al4V-ELI 125° Standard Size 2 Stem 140
MO-STAC-25/03	3	Cementless Ti6Al4V-ELI 125° Standard Size 3 Stem 145
MO-STAC-25/04	4	Cementless Ti6Al4V-ELI 125° Standard Size 4 Stem 150
MO-STAC-25/05	5	Cementless Ti6Al4V-ELI 125° Standard Size 5 Stem 154
MO-STAC-25/06	6	Cementless Ti6Al4V-ELI 125° Standard Size 6 Stem 160
MO-STAC-25/07	7	Cementless Ti6Al4V-ELI 125° Standard Size 7 Stem 165
MO-STAC-25/08	8	Cementless Ti6Al4V-ELI 125° Standard Size 8 Stem 170
MO-STAC-25/09	9	Cementless Ti6Al4V-ELI 125° Standard Size 9 Stem 180
MO-STAC-25/10	10	Cementless Ti6Al4V-ELI 125° Standard Size 10 Stem 189



### 135° STANDARD

PART NO.	SIZE (MM)	DESCRIPTION
MO-STAC-35/00	0	Cementless Ti6Al4V-ELI 135° Standard Size 0 Stem 115
MO-STAC-35/01	1	Cementless Ti6Al4V-ELI 135° Standard Size 1 Stem 130
MO-STAC-35/02	2	Cementless Ti6Al4V-ELI 135° Standard Size 2 Stem 140
MO-STAC-35/03	3	Cementless Ti6Al4V-ELI 135° Standard Size 3 Stem 145
MO-STAC-35/04	4	Cementless Ti6Al4V-ELI 135° Standard Size 4 Stem 150
MO-STAC-35/05	5	Cementless Ti6Al4V-ELI 135° Standard Size 5 Stem 154
MO-STAC-35/06	6	Cementless Ti6Al4V-ELI 135° Standard Size 6 Stem 160
MO-STAC-35/07	7	Cementless Ti6Al4V-ELI 135° Standard Size 7 Stem 165
MO-STAC-35/08	8	Cementless Ti6Al4V-ELI 135° Standard Size 8 Stem 170
MO-STAC-35/09	9	Cementless Ti6Al4V-ELI 135° Standard Size 9 Stem 180
MO-STAC-35/10	10	Cementless Ti6Al4V-ELI 135° Standard Size 10 Stem 189



### 135° LATERAL

PART NO.	SIZE (MM)	DESCRIPTION
MO-STBC-35/00	0	Cementless Ti6Al4V-ELI 135° Lateral Size 0 Stem 115
MO-STBC-35/01	1	Cementless Ti6Al4V-ELI 135° Lateral Size 1 Stem 130
MO-STBC-35/02	2	Cementless Ti6Al4V-ELI 135° Lateral Size 2 Stem 140
MO-STBC-35/03	3	Cementless Ti6Al4V-ELI 135° Lateral Size 3 Stem 145
MO-STBC-35/04	4	Cementless Ti6Al4V-ELI 135° Lateral Size 4 Stem 150
MO-STBC-35/05	5	Cementless Ti6Al4V-ELI 135° Lateral Size 5 Stem 154
MO-STBC-35/06	6	Cementless Ti6Al4V-ELI 135° Lateral Size 6 Stem 160
MO-STBC-35/07	7	Cementless Ti6Al4V-ELI 135° Lateral Size 7 Stem 165
MO-STBC-35/08	8	Cementless Ti6Al4V-ELI 135° Lateral Size 8 Stem 170
MO-STBC-35/09	9	Cementless Ti6Al4V-ELI 135° Lateral Size 9 Stem 180
MO-STBC-35/10	10	Cementless Ti6Al4V-ELI 135° Lateral Size 10 Stem 189



Material: Titanium Alloy (Ti6Al4V-ELI) with Osprovit<sup>®</sup> Hydroxyapatite coating

# LIBERTAS® MODULAR FEMORAL HEAD

## SYSTEM SIZING

### CoCr MODULAR FEMORAL HEAD (12/14)

PART NO.	SIZE (MM)	DESCRIPTION
MO-HDAA-22/00 12/14	22 0	Taper CoCr 22/0 Modular Femoral Head
MO-HDAA-22/35+ 12/14	22 +3.5	Taper CoCr 22/3.5+ Modular Femoral Head
MO-HDAA-28/00 12/14	28 0	Taper CoCr 28/0 Modular Femoral Head
MO-HDAA-28/35+ 12/14	28 +3.5	Taper CoCr 28/3.5+ Modular Femoral Head
MO-HDAA-28/70+ 12/14	28 +7	Taper CoCr 28/7+ Modular Femoral Head
MO-HDAA-28/35- 12/14	28 -3.5	Taper CoCr 28/3.5- Modular Femoral Head
MO-HDAA-32/00 12/14	32 0	Taper CoCr 32/0 Modular Femoral Head
MO-HDAA-32/40+ 12/14	32 +4	Taper CoCr 32/4+ Modular Femoral Head
MO-HDAA-32/70+ 12/14	32 +7	Taper CoCr 32/7+ Modular Femoral Head
MO-HDAA-32/40- 12/14	32 -4	Taper CoCr 32/4- Modular Femoral Head
MO-HDAA-36/00 12/14	36 0	Taper CoCr 36/0 Modular Femoral Head
MO-HDAA-36/40+ 12/14	36 +4	Taper CoCr 36/4+ Modular Femoral Head
MO-HDAA-36/70+ 12/14	36 +7	Taper CoCr 36/7+ Modular Femoral Head
MO-HDAA-36/40- 12/14	36 -4	Taper CoCr 36/4- Modular Femoral Head
MO-HDAA-40/00 12/14	40 0	Taper CoCr 40/0 Modular Femoral Head
MO-HDAA-40/40+ 12/14	40 +4	Taper CoCr 40/4+ Modular Femoral Head
MO-HDAA-40/70+ 12/14	40 +7	Taper CoCr 40/7+ Modular Femoral Head
MO-HDAA-40/40- 12/14	40 -4	Taper CoCr 40/4- Modular Femoral Head



Material: Cobalt Chromium (CoCr)

### BIOLOX® DELTA MODULAR FEMORAL HEAD(12/14)

PART NO.	SIZE (MM)	DESCRIPTION
MO-HDAI-28/35- 12/14	28 -3.5	Taper Biolox® delta 28/3.5- Modular Femoral Head
MO-HDAI-28/00 12/14	28 0	Taper Biolox® delta 28/0 Modular Femoral Head
MO- HDAI-28/35+ 12/14	28 +3.5	Taper Biolox® delta 28/3.5+ Modular Femoral Head
MO- HDAI-32/40- 12/14	32 -4	Taper Biolox® delta 32/4- Modular Femoral Head
MO- HDAI-32/00 12/14	32 0	Taper Biolox® delta 32/0 Modular Femoral Head
MO- HDAI-32/40+ 12/14	32 +4	Taper Biolox® delta 32/4+ Modular Femoral Head
MO- HDAI-32/70+ 12/14	32 +7	Taper Biolox® delta 32/7+ Modular Femoral Head
MO- HDAI-36/40- 12/14	36 -4	Taper Biolox® delta 36/4- Modular Femoral Head
MO- HDAI-36/00 12/14	36 0	Taper Biolox® delta 36/0 Modular Femoral Head
MO- HDAI-36/40+ 12/14	36 +4	Taper Biolox® delta 36/4+ Modular Femoral Head
MO- HDAI-36/80+ 12/14	36 +8	Taper Biolox® delta 36/8+ Modular Femoral Head
MO- HDAI-40/40- 12/14	40 -4	Taper Biolox® delta 40/4- Modular Femoral Head
MO- HDAI-40/00 12/14	40 0	Taper Biolox® delta 40/0 Modular Femoral Head
MO- HDAI-40/40+ 12/14	40 +4	Taper Biolox® delta 40/4+ Modular Femoral Head
MO- HDAI-40/80+ 12/14	40 +8	Taper Biolox® delta 40/8+ Modular Femoral Head



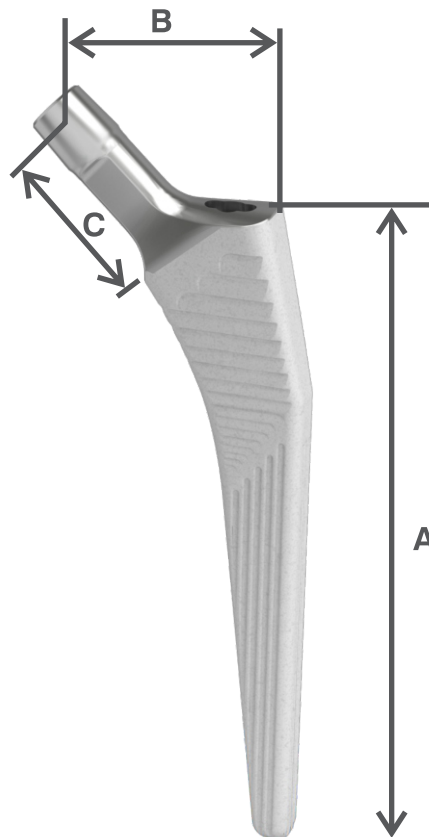
Material: Biolox® Delta Ceramic



# LIBERTAS® CEMENTLESS FEMORAL STEM STANDARD (125° NECK ANGLE)

## OFFSET AND NECK LENGTH CHART

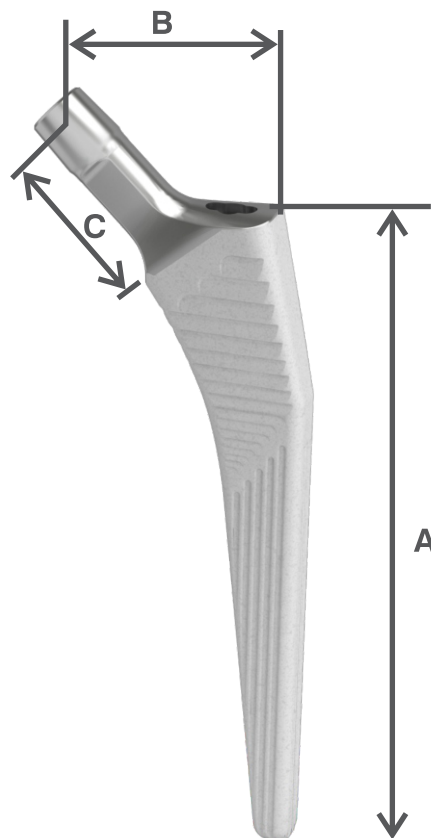
CEMENTLESS FEMORAL STEM STANDARD (125° NECK ANGLE)													
SIZE mm	A Stem Length (mm)	B						C					
		Horizontal Offset (mm)						Neck Length (mm)					
		-4.0	-3.5	STD	+3.5	+4.0	+7.0	-4.0	-3.5	STD	+3.5	+4.0	+7.0
00	115	41.7	42.2	45.0	47.9	48.3	50.8	34.8	35.3	38.8	42.3	42.8	45.8
01	130	42.2	42.7	45.5	48.4	48.8	51.3	34.8	35.3	38.8	42.3	42.8	45.8
02	140	43.2	43.7	46.5	49.4	49.8	52.3	34.8	35.3	38.8	42.3	42.8	45.8
03	145	43.7	44.2	47.0	49.9	50.3	52.8	34.8	35.3	38.8	42.3	42.8	45.8
04	150	44.7	45.2	48.0	50.9	51.3	53.8	34.8	35.3	38.8	42.3	42.8	45.8
05	154	45.2	45.7	48.5	51.4	51.8	54.3	34.8	35.3	38.8	42.3	42.8	45.8
06	160	45.7	46.2	49.0	51.9	52.3	54.8	34.8	35.3	38.8	42.3	42.8	45.8
07	165	46.7	47.2	50.0	52.9	53.3	55.8	34.8	35.3	38.8	42.3	42.8	45.8
08	170	47.2	47.7	50.5	53.4	53.8	56.3	34.8	35.3	38.8	42.3	42.8	45.8
09	180	48.2	48.7	51.5	54.4	54.8	57.3	34.8	35.3	38.8	42.3	42.8	45.8
10	189	49.2	49.7	52.5	55.4	55.8	58.3	34.8	35.3	38.8	42.3	42.8	45.8



# LIBERTAS® CEMENTLESS FEMORAL STEM STANDARD (135° NECK ANGLE)

## OFFSET AND NECK LENGTH CHART

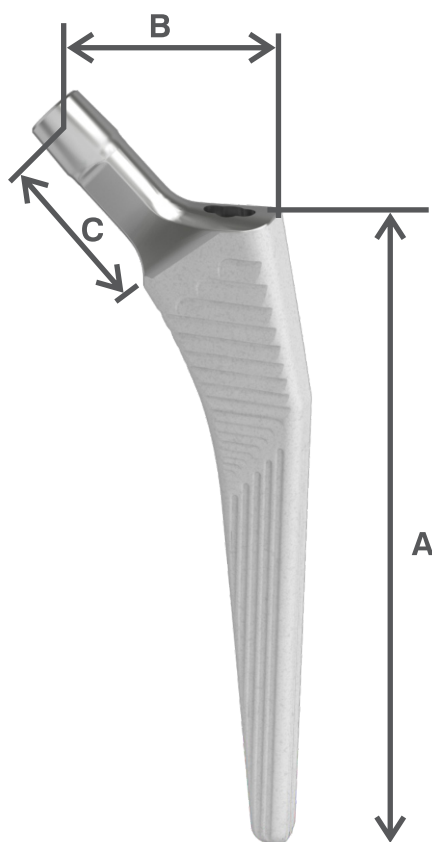
CEMENTLESS FEMORAL STEM STANDARD (135° NECK ANGLE)													
SIZE (mm)	A Stem Length (mm)	B						C					
		Horizontal Offset (mm)						Neck Length (mm)					
		-4.0	-3.5	STD	+3.5	+4.0	+7.0	-4.0	-3.5	STD	+3.5	+4.0	+7.0
00	115	35.2	35.5	38.0	40.5	40.8	43.0	34.8	35.3	38.8	42.3	42.8	45.8
01	130	35.7	36.0	38.5	41.0	41.3	43.5	34.8	35.3	38.8	42.3	42.8	45.8
02	140	36.7	37.0	39.5	42.0	42.3	44.5	34.8	35.3	38.8	42.3	42.8	45.8
03	145	37.2	37.5	40.0	42.5	42.8	45.0	34.8	35.3	38.8	42.3	42.8	45.8
04	150	38.2	38.5	41.0	43.5	43.8	46.0	34.8	35.3	38.8	42.3	42.8	45.8
05	154	38.7	39.0	41.5	44.0	44.3	46.5	34.8	35.3	38.8	42.3	42.8	45.8
06	160	39.2	39.5	42.0	44.5	44.8	47.0	34.8	35.3	38.8	42.3	42.8	45.8
07	165	40.2	40.5	43.0	45.5	45.8	48.0	34.8	35.3	38.8	42.3	42.8	45.8
08	170	40.7	41.0	43.5	46.0	46.3	48.5	34.8	35.3	38.8	42.3	42.8	45.8
09	180	41.7	42.0	44.5	47.0	47.3	49.5	34.8	35.3	38.8	42.3	42.8	45.8
10	189	42.7	43.0	45.5	48.0	48.3	50.5	34.8	35.3	38.8	42.3	42.8	45.8



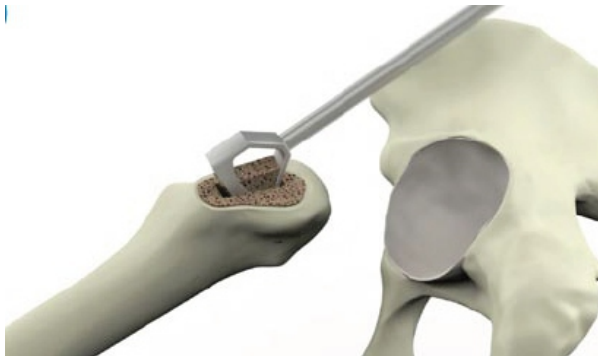
# LIBERTAS® CEMENTLESS FEMORAL STEM LATERAL (135° NECK ANGLE)

## OFFSET AND NECK LENGTH CHART

CEMENTLESS FEMORAL STEM LATERAL (135° NECK ANGLE)													
SIZE (mm)	A Stem Length (mm)	B						C					
		Horizontal Offset (mm)						Neck Length (mm)					
		-4.0	-3.5	STD	+3.5	+4.0	+7.0	-4.0	-3.5	STD	+3.5	+4.0	+7.0
00	115	42.2	42.5	45.0	47.5	47.8	50.0	39.0	39.5	43.0	46.5	47.0	50.0
01	130	42.7	43.0	45.5	48.0	48.3	50.5	39.0	39.5	43.0	46.5	47.0	50.0
02	140	43.7	44.0	46.5	49.0	49.3	51.5	39.0	39.5	43.0	46.5	47.0	50.0
03	145	44.2	44.5	47.0	49.5	49.8	52.0	39.0	39.5	43.0	46.5	47.0	50.0
04	150	45.2	45.5	48.0	50.5	50.8	53.0	39.0	39.5	43.0	46.5	47.0	50.0
05	154	45.7	46.0	48.5	51.0	51.3	53.5	39.0	39.5	43.0	46.5	47.0	50.0
06	160	46.2	46.5	49.0	51.5	51.8	54.0	39.0	39.5	43.0	46.5	47.0	50.0
07	165	47.2	47.5	50.0	52.5	52.8	55.0	39.0	39.5	43.0	46.5	47.0	50.0
08	170	47.7	48.0	50.5	53.0	53.3	55.5	39.0	39.5	43.0	46.5	47.0	50.0
09	180	48.7	49.0	51.5	54.0	54.3	56.5	39.0	39.5	43.0	46.5	47.0	50.0
10	189	49.7	50.0	52.5	55.0	55.3	57.5	39.0	39.5	43.0	46.5	47.0	50.0



# SURGICAL STEPS



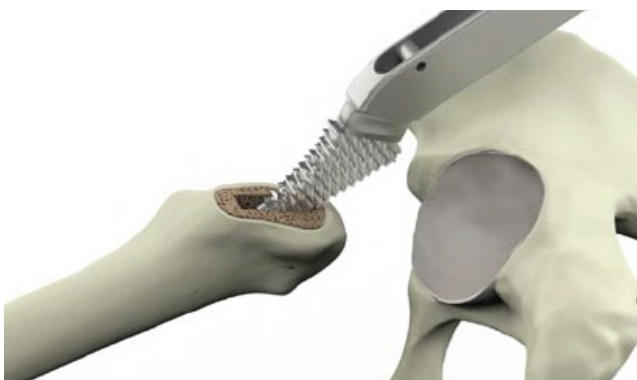
- 1 The proximal femur is opened using the box chisel which is positioned laterally and posteriorly so that entry is in line with the femoral intramedullary canal.



- 2 The smallest (4-8mm tapered) intramedullary reamer, which has sharp tip, is mounted on the T-Handle, and used to open up the femoral canal. Care should be taken with this first reamer and if the bone quality is poor then the 8mm intramedullary reamer should be used first in its place, as it has a more rounded tip.



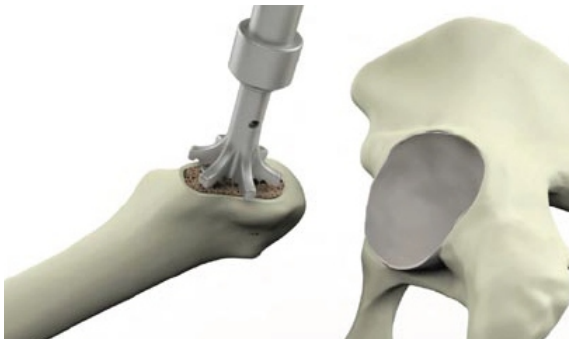
- 3 Next the 9mm intramedullary reamer is used.



- 4 The smallest rasp (Size 9) is used first to prepare the proximal femur. The small tommy bar is used to control version.



- 5 If the fit of this first rasp is unstable then the next size of intramedullary reamer is used followed by the corresponding size rasp. This ream/rasp technique is continued until the fit of the rasp is stable.



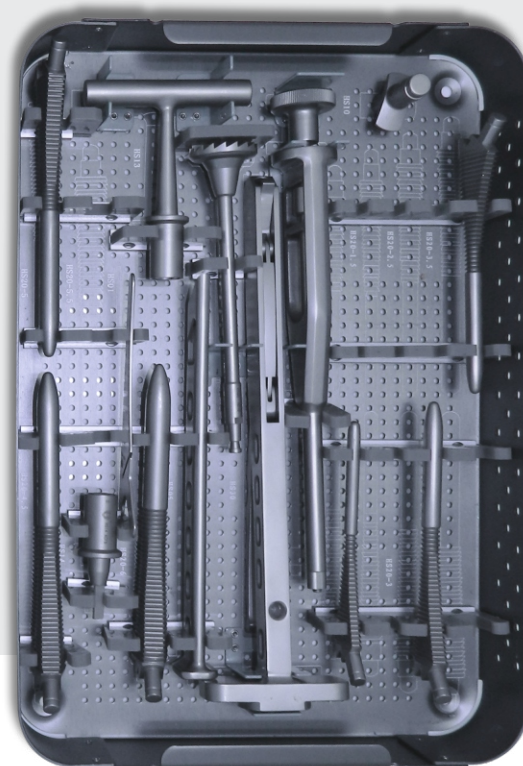
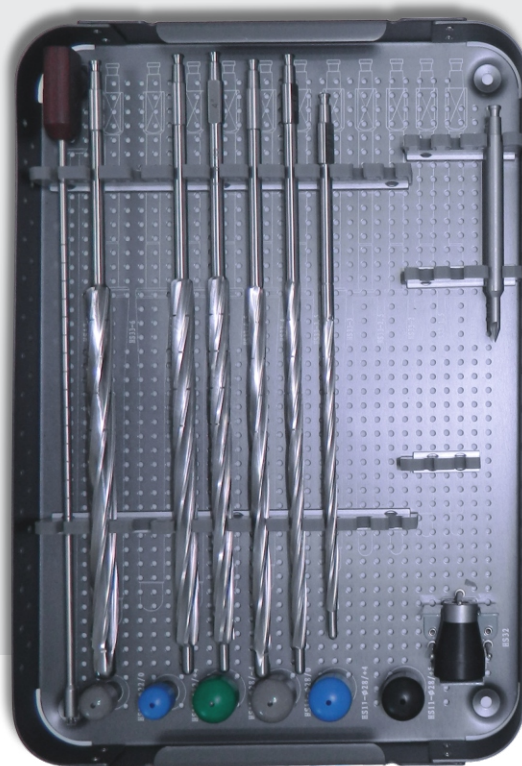
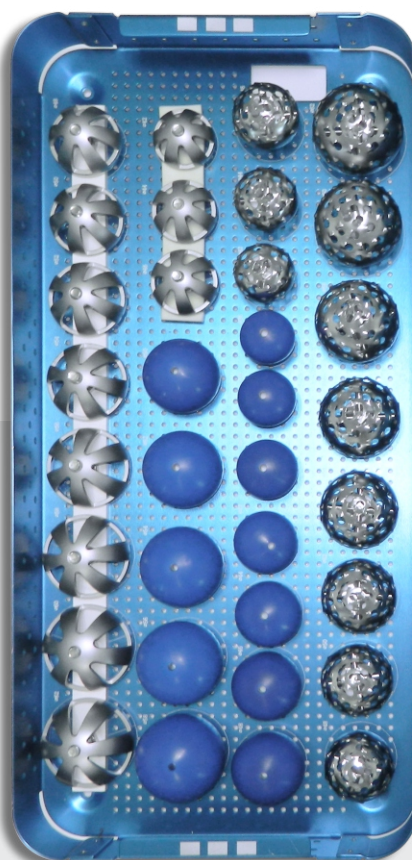
- 6 With the correct rasp in place, remove the rasp handle and if required trim the neck using the calcar cutter fitted onto the T-handle.



- 7 With the rasp still in place, the fin cutter is gently tapped home into the groove in the rasp with the teeth facing the greater trochanter.

# INSTRUMENT SET





1. Accetabulum Cup System
2. Uncemented Stem



# maxx

---

## medical

Libertas® Hip System		
		Maxx Orthopedics, Inc. Norristown, PA 19403, USA RMS UK, Ltd. 28 Trinity Rd, Nailsea Somerset BS 484NU, UK
		 
Carefully read all instructions and be familiar with the surgical techniques prior to use.		

Please see the package inserts for complete device description, product selection information, indications, contraindications, precautions, adverse effects, warnings, materials, sterilization and patient guidance associated with the LIBERTAS® Total Hip System.

CAUTION: THESE DEVICES ARE RESTRICTED TO SALE BY OR ON THE ORDER OF A LICENSED PHYSICIAN

LIBERTAS® Hip is manufactured by Maxx Orthopedics, Inc. LIBERTAS, LIBERTAS HIP, and Pursue Life are Registered Trademarks of Maxx Orthopedics, Inc.

©2019 Maxx Orthopedics. All rights reserved. Updated March 2019

[www.maxxortho.com](http://www.maxxortho.com)