

# CLAVO™

## Intramedullary Nailing System

**Corporate Headquarters, Vapi**  
Meril Healthcare Pvt. Ltd.  
H1-H3, Meril Park  
Survey No. 135/2/B & 174/2  
Muktanand Marg, Chala  
Vapi 396 191. Gujarat. India.  
T: +91 260 3052 100  
F: +91 260 3052 125  
E: orthopedics@merillife.com

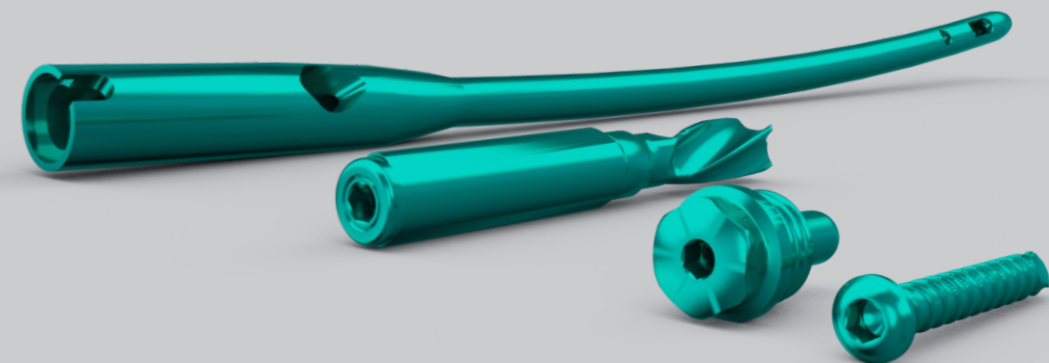
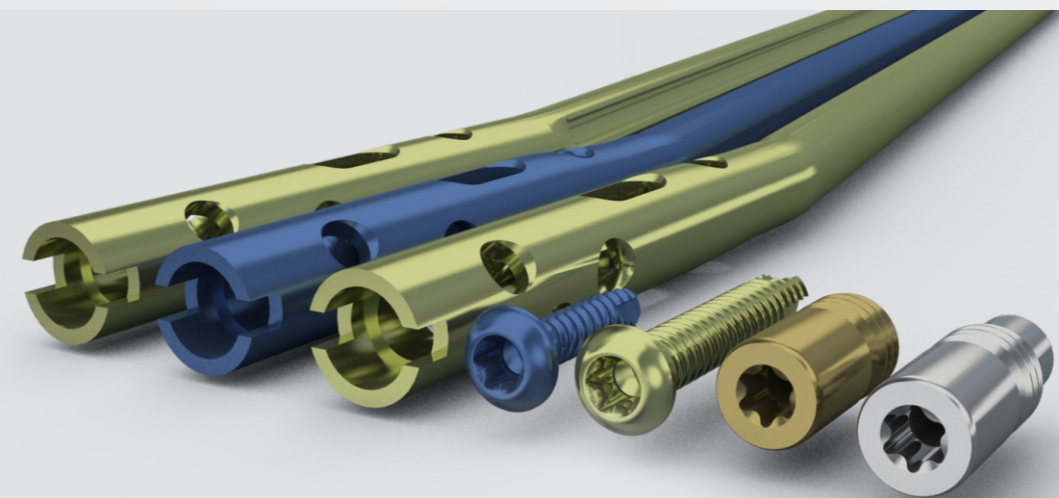
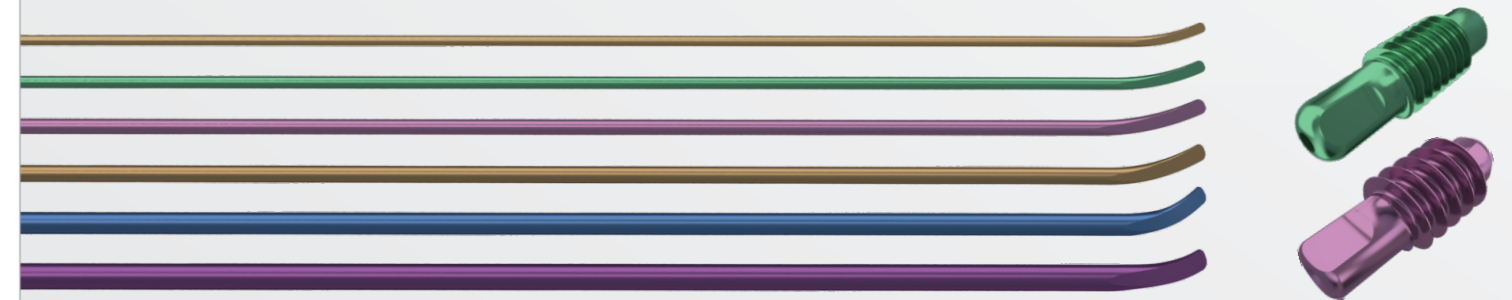
**International Sales & Marketing**  
Meril Healthcare Pvt. Ltd.  
612, B-Wing, Bonanaza  
Sahar Plaza, Andheri East  
Mumbai 400 059  
Maharashtra. India.  
T: +91 22 3935 0700  
F: +91 22 4047 9717

**India Sales & Marketing**  
Meril Healthcare Pvt. Ltd.  
512, Midas, Sahar Plaza, J.B. Nagar  
Andheri East, Mumbai 400 059  
Maharashtra. India.  
T: +91 22 4047 9797

**Meril South America**  
DOC MED LTDA  
1079 – Cep: 04077-003 - Moema  
Sao Paulo, Brazil  
T/F: +55 11 3624 5935/6

**Meril Germany**  
Bornheimer Strasse 135 – 137  
D – 53119 Bonn, Germany  
T/F: +49 228 7100 4000/1

**Meril Turkey**  
Imalat Ve Ticaret A.S.  
6, Mimar Sinan Mah.,  
Cavusbasi Cad, Ozde Sok  
Aydin Eksi Is Merkezi Kat:1  
Cekmekoy/Istanbul, Turkey  
T: +90 53 2272 5172



# PFRN Nailing System

The PFRN nailing system has the anatomical design for best fit in the femur bone.

The PFRN nailing system has a M/L angle of 5° allows easy insertion & bendable tip reduces stress on the bone with Static or dynamic locking options



CLAVO™ PROXIMAL FEMORAL ROTATIONAL-STABILITY NAIL

PFRN is available in 4 sizes Extra small 170mm, Small 200mm, Standard 240mm & Long 260 to 440mm.

The PFRN Small & std.Nail for Femur trochanteric area fracture.

- 31-A1 per-trochanteric simple
- 31-A2 per-trochanteric multi-fragmentary
- 31-A3 inter-trochanteric fracture

The PFRN Long Nail for Femur Low and extended sub-trochanteric fractures.

- Ipsilateral trochanteric fractures
- Combination fractures (in the proximal femur)
- Pathological fractures

PFRN anti-rotation Screw Provide Rotational and angular stability by locked in femoral head & providing additional Support.

PFRN anti-rotation Screw had a lot higher cut-out resistance in comparison with commonly-used screw systems.

## CLAVO™ Proximal Femoral Rotational - Stability Nail, Sterile

Material : TAN(Ti-6Al-7Nb)

PRODUCT CODE	DIAMETER	LENGTH
MT-NT0109170	Ø 9.0	170
MT-NT0110170	Ø 10.0	170
MT-NT0111170	Ø 11.0	170
MT-NT0112170	Ø 12.0	170
MT-NT0109200	Ø 9.0	200
MT-NT0110200	Ø 10.0	200
MT-NT0111200	Ø 11.0	200
MT-NT0112200	Ø 12.0	200
MT-NT0109240	Ø 9.0	240
MT-NT0110240	Ø 10.0	240
MT-NT0111240	Ø 11.0	240
MT-NT0112240	Ø 12.0	240
MT-NT0109300L	Ø 9.0	300
MT-NT0109320L	Ø 9.0	320
MT-NT0109340L	Ø 9.0	340
MT-NT0109360L	Ø 9.0	360
MT-NT0109380L	Ø 9.0	380
MT-NT0109400L	Ø 9.0	400
MT-NT0109420L	Ø 9.0	420
MT-NT0109440L	Ø 9.0	440
MT-NT0110300L	Ø 10.0	300
MT-NT0110320L	Ø 10.0	320



PRODUCT CODE	DIAMETER	LENGTH
MT-NT0110340L	Ø 10.0	340
MT-NT0110360L	Ø 10.0	360
MT-NT0110380L	Ø 10.0	380
MT-NT0110400L	Ø 10.0	400
MT-NT0110420L	Ø 10.0	420
MT-NT0110440L	Ø 10.0	440
MT-NT0112300L	Ø 12.0	300
MT-NT0112320L	Ø 12.0	320
MT-NT0112340L	Ø 12.0	340
MT-NT0112360L	Ø 12.0	360
MT-NT0112380L	Ø 12.0	380
MT-NT0112400L	Ø 12.0	400
MT-NT0112420L	Ø 12.0	420
MT-NT0112440L	Ø 12.0	440
MT-NT0109300R	Ø 9.0	300
MT-NT0109320R	Ø 9.0	320
MT-NT0109340R	Ø 9.0	340
MT-NT0109360R	Ø 9.0	360
MT-NT0109380R	Ø 9.0	380
MT-NT0109400R	Ø 9.0	400
MT-NT0109420R	Ø 9.0	420
MT-NT0109440R	Ø 9.0	440
MT-NT0110300R	Ø 10.0	300
MT-NT0110320R	Ø 10.0	320
MT-NT0110340R	Ø 10.0	340
MT-NT0110360R	Ø 10.0	360
MT-NT0110380R	Ø 10.0	380
MT-NT0110400R	Ø 10.0	400
MT-NT0110420R	Ø 10.0	420
MT-NT0110440R	Ø 10.0	440
MT-NT0112300R	Ø 12.0	300



PRODUCT CODE	DIAMETER	LENGTH
MT-NT0112320R	Ø 12.0	320
MT-NT0112340R	Ø 12.0	340
MT-NT0112360R	Ø 12.0	360
MT-NT0112380R	Ø 12.0	380
MT-NT0112400R	Ø 12.0	400
MT-NT0112420R	Ø 12.0	420
MT-NT0112440R	Ø 12.0	440

**CLAVO™ Anti-Rotation Screw for PFRN, Sterile** Material : TAN(Ti-6Al-7Nb)

PRODUCT CODE	LENGTH
MT-BT0100075	75
MT-BT0100080	80
MT-BT0100085	85
MT-BT0100090	90
MT-BT0100095	95
MT-BT0100100	100
MT-BT0100105	105
MT-BT0100110	110
MT-BT0100115	115
MT-BT0100120	120



**CLAVO™ Nail Cap for PFRN, Sterile** Material : TAV(Ti-6Al-4V)


PRODUCT CODE	DIAMETER	LENGTH
MT-ET0100000	12	0
MT-ET0100005	12	5
MT-ET0100010	12	10
MT-ET0100015	12	15



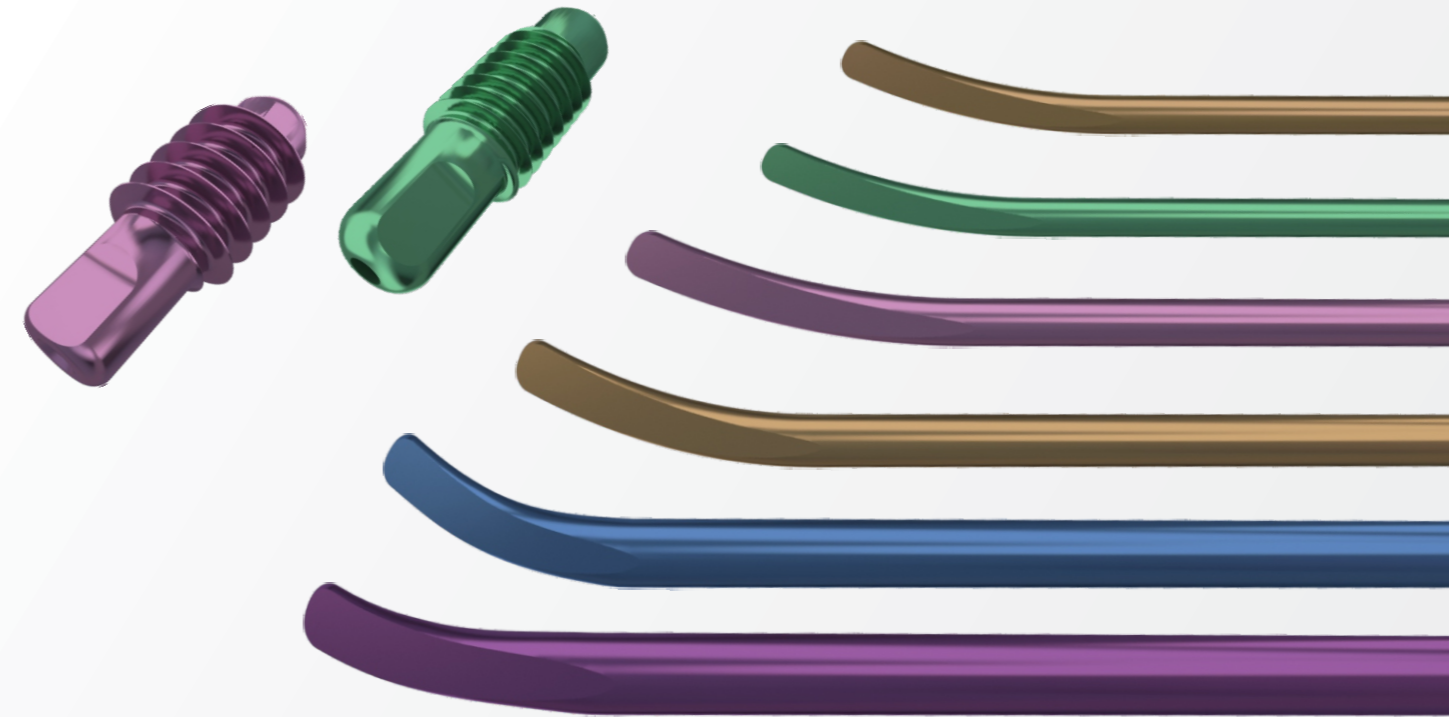
## CLAVO™ 4.9mm Locking Bolt, Self Tapping, Sterile

Material : TAN | Head Diameter : 8.0mm | Outer Diameter : 4.9mm  
Core Diameter : 4.25mm | Pitch : 2.75mm

PRODUCT CODE	LENGTH
MT-ST2549026	26
MT-ST2549028	28
MT-ST2549030	30
MT-ST2549032	32
MT-ST2549034	34
MT-ST2549036	36
MT-ST2549038	38
MT-ST2549040	40
MT-ST2549042	42
MT-ST2549044	44
MT-ST2549046	46
MT-ST2549048	48
MT-ST2549050	50
MT-ST2549052	52
MT-ST2549054	54
MT-ST2549056	56
MT-ST2549058	58
MT-ST2549060	60
MT-ST2549064	64
MT-ST2549068	68
MT-ST2549072	72
MT-ST2549076	76
MT-ST2549080	80
MT-ST2549085	85
MT-ST2549090	90
MT-ST2549095	95
MT-ST2549100	100



# Elastic Titanium Nail



Easy nail insertion and sliding along the medullary canal.

Elastic Titanium Nails are available in six diameters: 1.5mm, 2.0mm, 2.5mm, 3.0mm, 3.5mm & 4.0mm. The 1.5mm diameter nail is 300mm Long. The 2.0mm through 4.0mm diameter nails are 440mm long with easy insertion and sliding Tip.

Available in titanium alloy (Ti-6Al-4V).

Ti alloy implants combine excellent mechanical stability with elastic properties.

Two sizes of Nail Caps to cover all nail Diameters. Nail Cap is design to prevent soft tissue irritation.

Sharp self-cutting thread in Nail Cap for proper fixation in bone.

ETN (Elastic Titanium Nail) is Used for the osteosynthesis of clavicle, femoral, Tibia, radius ulna and Humerus Fractures.

The Diameter of the individual nail should be 30-40% of the narrowest diameter of the medullary canal.

### Product Information :

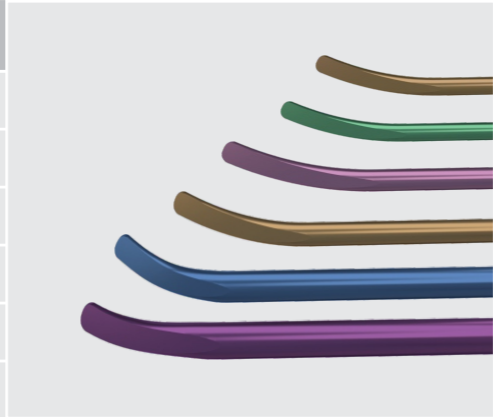
The Elastic titanium nail system was developed for elastic stable intramedullary nailing.

The optimal material was chosen for appropriate mechanical stability combined with adequate elasticity.

The tip of the nail allows easy insertion and sliding.

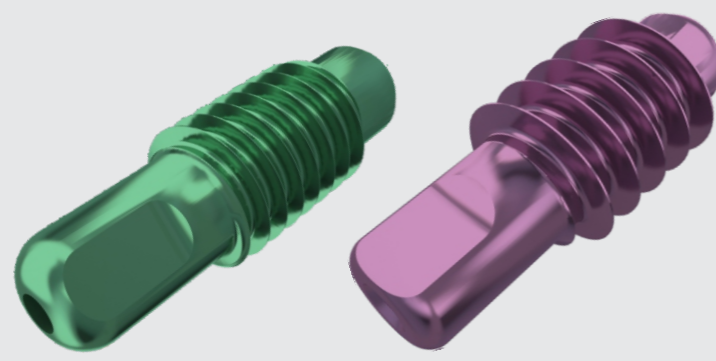
**CLAVO™ Elastic Titanium Nail** Material : TAV(Ti-6Al-4V)

PRODUCT CODE	DIAMETER	LENGTH
MT-NT0515300	Ø1.5	300
MT-NT0520440	Ø2.0	440
MT-NT0525440	Ø2.5	440
MT-NT0530440	Ø3.0	440
MT-NT0535440	Ø3.5	440
MT-NT0540440	Ø4.0	440

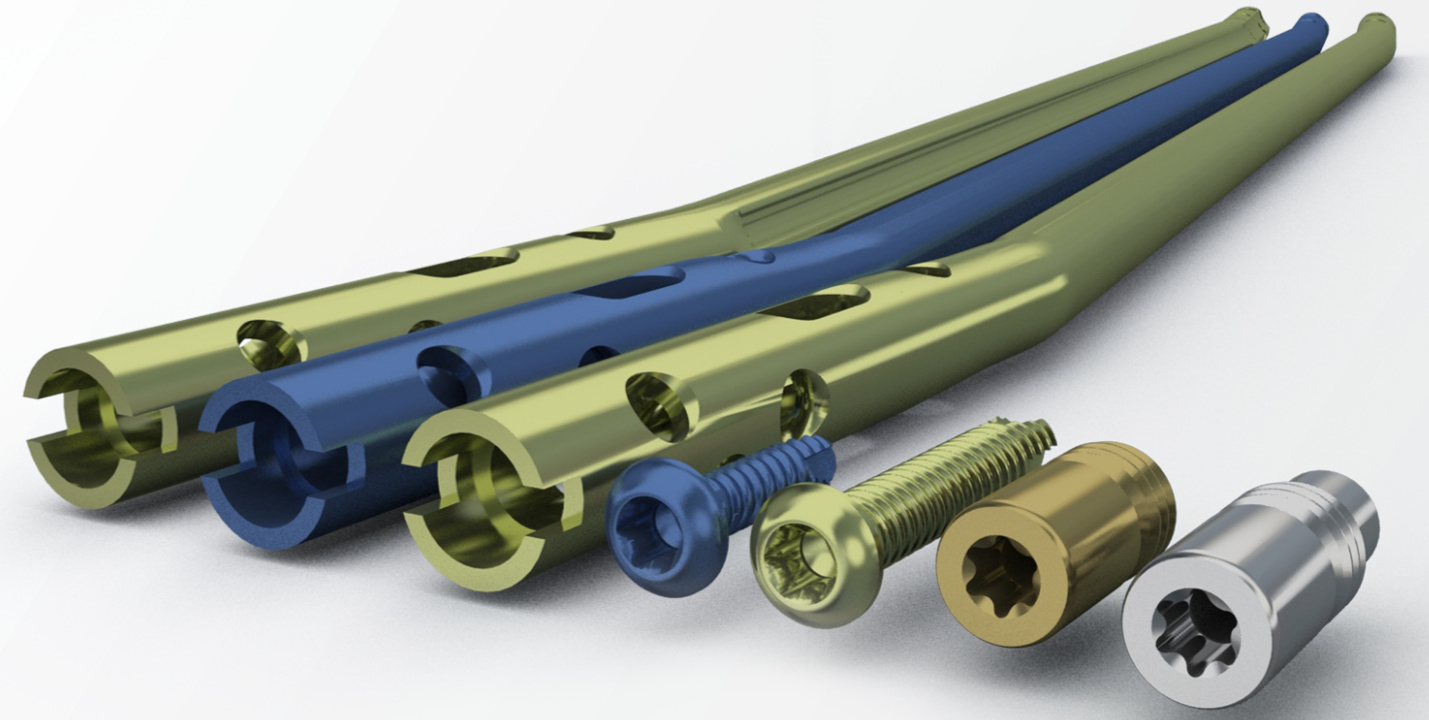


**CLAVO™ Nail Cap For Elastic Titanium Nail** Material : TAV(Ti-6Al-4V)

PRODUCT CODE	DIAMETER	LENGTH
MT-ET0615000	-	-
MT-ET0630000	-	-



# Cannulated Titanium Tibial Nail System



Three innovative locking options, in combination with dual-core locking screws, to increase the stability of the proximal fragment for proximal third fractures.

Self-retaining T25 Star drive recess for easy Pick-up and insertion of Nail Cap.

0mm Nail Caps sit flush with nail, 5, 10 & 15mm Nail Caps extended nail height if nail is over inserted.

Distal oblique locking option to prevent soft tissue damage and increase stability of the distal fragment.

The CTTN (Cannulated titanium tibia nail) is designed to fit anatomically in the medullary canal, allowing indirect reduction.

CTTN Nail are Cannulated.

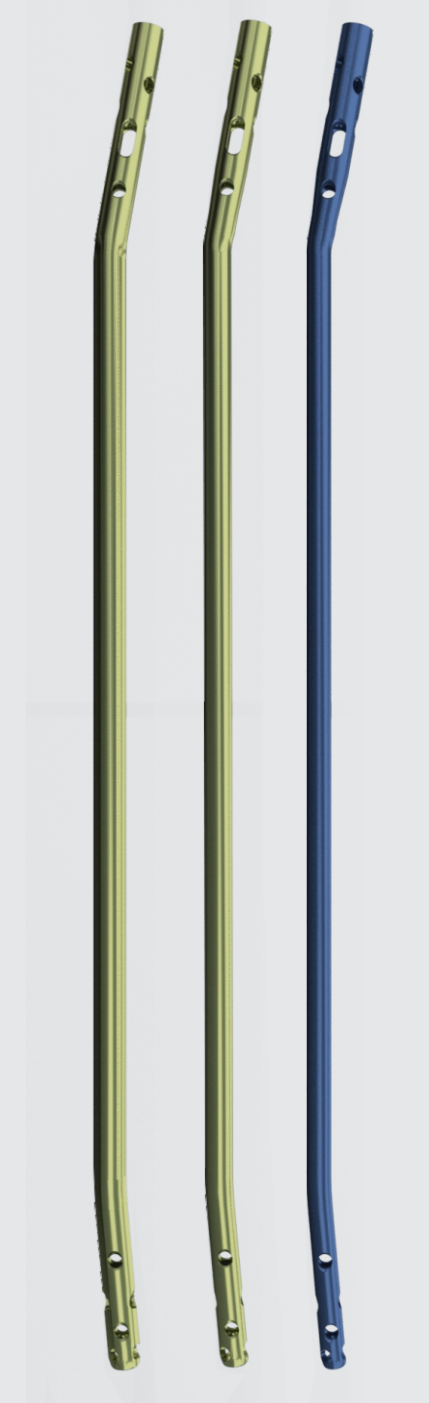
For diaphyseal fracture, it is recommended to lock distally first, to allow intraoperative compression. For distal fractures, it is recommended to lock distally first, to facilitate reduction.

**CLAVO™ Cannulated Titanium Tibial Nail System** Material : TAN(Ti-6Al-7Nb)

PRODUCT CODE	DIAMETER	LENGTH
MT-NT0208255	Ø 8.0	255
MT-NT0208270	Ø 8.0	270
MT-NT0208285	Ø 8.0	285
MT-NT0208300	Ø 8.0	300
MT-NT0208315	Ø 8.0	315
MT-NT0208330	Ø 8.0	330
MT-NT0208345	Ø 8.0	345
MT-NT0208360	Ø 8.0	360
MT-NT0208375	Ø 8.0	375
MT-NT0208390	Ø 8.0	390
MT-NT0208405	Ø 8.0	405
MT-NT0208420	Ø 8.0	420
MT-NT0208435	Ø 8.0	435
MT-NT0208450	Ø 8.0	450
MT-NT0209255	Ø 9.0	255
MT-NT0209270	Ø 9.0	270
MT-NT0209285	Ø 9.0	285
MT-NT0209300	Ø 9.0	300
MT-NT0209315	Ø 9.0	315
MT-NT0209330	Ø 9.0	330
MT-NT0209345	Ø 9.0	345
MT-NT0209360	Ø 9.0	360
MT-NT0209375	Ø 9.0	375
MT-NT0209390	Ø 9.0	390
MT-NT0209405	Ø 9.0	405
MT-NT0209420	Ø 9.0	420
MT-NT0209435	Ø 9.0	435
MT-NT0209450	Ø 9.0	450
MT-NT0210255	Ø 10.0	255
MT-NT0210270	Ø 10.0	270
MT-NT0210285	Ø 10.0	285



PRODUCT CODE	DIAMETER	LENGTH
MT-NT0210300	Ø 10.0	300
MT-NT0210315	Ø 10.0	315
MT-NT0210330	Ø 10.0	330
MT-NT0210345	Ø 10.0	345
MT-NT0210360	Ø 10.0	360
MT-NT0210375	Ø 10.0	375
MT-NT0210390	Ø 10.0	390
MT-NT0210405	Ø 10.0	405
MT-NT0210420	Ø 10.0	420
MT-NT0210435	Ø 10.0	435
MT-NT0210450	Ø 10.0	450
MT-NT0211255	Ø 11.0	255
MT-NT0211270	Ø 11.0	270
MT-NT0211285	Ø 11.0	285
MT-NT0211300	Ø 11.0	300
MT-NT0211315	Ø 11.0	315
MT-NT0211330	Ø 11.0	330
MT-NT0211345	Ø 11.0	345
MT-NT0211360	Ø 11.0	360
MT-NT0211375	Ø 11.0	375
MT-NT0211390	Ø 11.0	390
MT-NT0211405	Ø 11.0	405
MT-NT0211420	Ø 11.0	420
MT-NT0211435	Ø 11.0	435
MT-NT0211450	Ø 11.0	450
MT-NT0212255	Ø 12.0	255
MT-NT0212270	Ø 12.0	270
MT-NT0212285	Ø 12.0	285
MT-NT0212300	Ø 12.0	300
MT-NT0212315	Ø 12.0	315
MT-NT0212330	Ø 12.0	330



PRODUCT CODE	DIAMETER	LENGTH
MT-NT0212345	Ø 12.0	345
MT-NT0212360	Ø 12.0	360
MT-NT0212375	Ø 12.0	375
MT-NT0212390	Ø 12.0	390
MT-NT0212405	Ø 12.0	405
MT-NT0212420	Ø 12.0	420
MT-NT0212435	Ø 12.0	435
MT-NT0212450	Ø 12.0	450
MT-NT0213255	Ø 13.0	255
MT-NT0213270	Ø 13.0	270
MT-NT0213285	Ø 13.0	285
MT-NT0213300	Ø 13.0	300
MT-NT0213315	Ø 13.0	315
MT-NT0213330	Ø 13.0	330
MT-NT0213345	Ø 13.0	345
MT-NT0213360	Ø 13.0	360
MT-NT0213375	Ø 13.0	375
MT-NT0213390	Ø 13.0	390
MT-NT0213405	Ø 13.0	405
MT-NT0213420	Ø 13.0	420
MT-NT0213435	Ø 13.0	435
MT-NT0213450	Ø 13.0	450



### CLAVO™ Nail Cap For CTTN Material : TAN(Ti-6Al-7Nb)

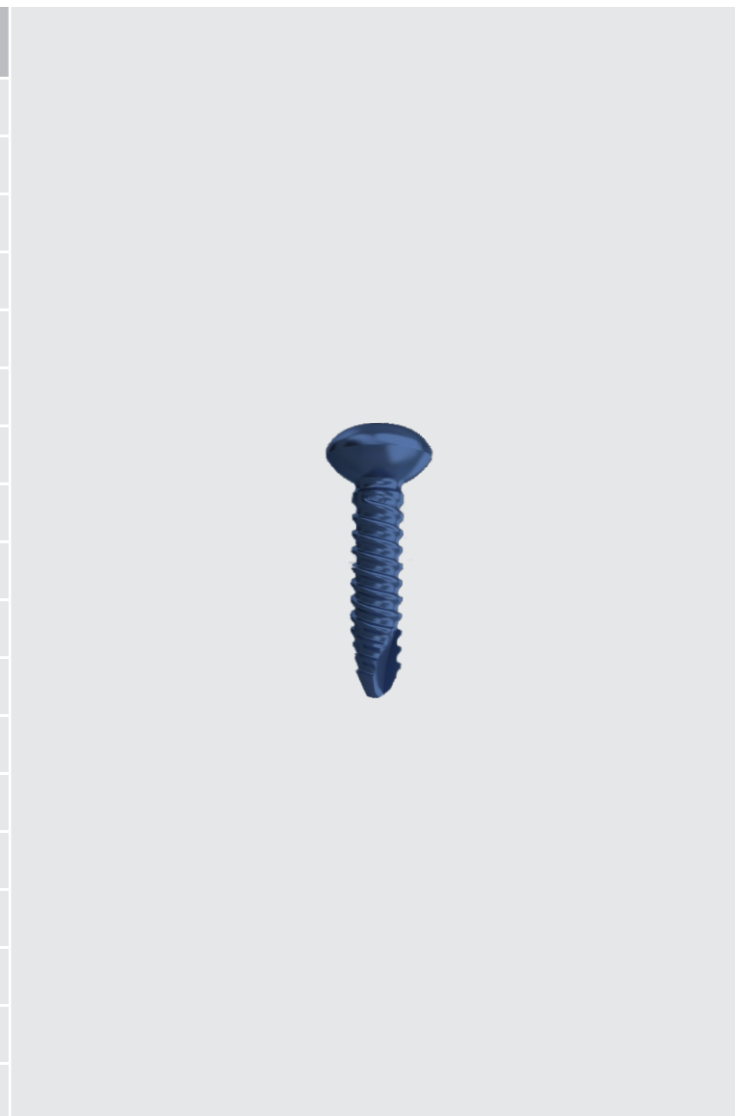
PRODUCT CODE	DIAMETER	LENGTH
MT-ET0208000	-	-
MT-ET0208005	-	-
MT-ET0208010	-	-
MT-ET0208015	-	-
MT-ET0208000L	-	-
MT-ET0208005L	-	-
MT-ET0208010L	-	-
MT-ET0208015L	-	-



### CLAVO™ 4.0mm Locking Screw Medullary Nail

Material : TAN(Ti-6Al-7Nb) | Head Diameter : 8.0mm | Outer Diameter : 3.9mm  
Core Diameter : 3.25mm | Pitch : 1.25mm

PRODUCT CODE	LENGTH
MT-ST1540018	18mm
MT-ST1540020	20mm
MT-ST1540022	22mm
MT-ST1540024	24mm
MT-ST1540026	26mm
MT-ST1540028	28mm
MT-ST1540030	30mm
MT-ST1540032	32mm
MT-ST1540034	34mm
MT-ST1540036	36mm
MT-ST1540038	38mm
MT-ST1540040	40mm
MT-ST1540042	42mm
MT-ST1540044	44mm
MT-ST1540046	46mm
MT-ST1540048	48mm
MT-ST1540050	50mm
MT-ST1540052	52mm



PRODUCT CODE	LENGTH
MT-ST1540054	54mm
MT-ST1540056	56mm
MT-ST1540058	58mm
MT-ST1540060	60mm
MT-ST1540062	62mm
MT-ST1540064	64mm
MT-ST1540066	66mm
MT-ST1540068	68mm
MT-ST1540070	70mm
MT-ST1540072	72mm
MT-ST1540074	74mm
MT-ST1540076	76mm
MT-ST1540078	78mm
MT-ST1540080	80mm



### CLAVO™ 5.0mm Locking Screw Medullary Nail

Material : TAN(Ti-6Al-7Nb) | Head Diameter : 8.0mm | Outer Diameter : 4.9mm  
 Core Diameter : 4.25mm | Pitch : 1.25mm

PRODUCT CODE	LENGTH
MT-ST2750026	26mm
MT-ST2750028	28mm
MT-ST2750030	30mm
MT-ST2750032	32mm
MT-ST2750034	34mm
MT-ST2750036	36mm
MT-ST2750038	38mm
MT-ST2750040	40mm
MT-ST2750042	42mm
MT-ST2750044	44mm
MT-ST2750046	46mm
MT-ST2750048	48mm



PRODUCT CODE	LENGTH
MT-ST2750050	50mm
MT-ST2750052	52mm
MT-ST2750054	54mm
MT-ST2750056	56mm
MT-ST2750058	58mm
MT-ST2750060	60mm
MT-ST2750062	62mm
MT-ST2750064	64mm
MT-ST2750066	66mm
MT-ST2750068	68mm
MT-ST2750070	70mm
MT-ST2750072	72mm
MT-ST2750074	74mm
MT-ST2750076	76mm
MT-ST2750078	78mm
MT-ST2750080	80mm
MT-ST2750085	85mm
MT-ST2750090	90mm
MT-ST2750095	95mm
MT-ST2750100	100mm

